

Volume 10 • January 1984

Directory of  
Faculty Contracts  
and Bargaining Agents  
In Institutions of Higher Education

Joel M. Douglas  
with Lorraine De Bona



THE NATIONAL CENTER FOR THE STUDY OF COLLECTIVE BARGAINING IN  
HIGHER EDUCATION AND THE PROFESSIONS—BARUCH COLLEGE  
CITY UNIVERSITY OF NEW YORK

NATIONAL CENTER FOR THE STUDY OF COLLECTIVE  
BARGAINING IN HIGHER EDUCATION AND THE PROFESSIONS

The National Center is an impartial, nonprofit educational institution serving as a clearinghouse and forum for those engaged in collective bargaining (and the related processes of grievance administration and arbitration) in colleges and universities and the professions. Operating on the campus of Baruch College, City University of New York, the Center addresses its research to scholars and practitioners in these fields.

Membership consists of institutions and individuals from all regions of the United States and Canada. Activities are financed primarily by membership, conference and workshop fees, foundation grants, and income from various services and publications made available to members and the public.

Inquiries regarding membership, publication or research orders should be addressed to National Center for the Study of Collective Bargaining in Higher Education and the Professions, Baruch College, CUNY, 17 Lexington Avenue, Box 322, New York, New York 10010.

NATIONAL ADVISORY COMMITTEE

DETER ARUM  
Dir. of Higher Education  
NEA

MAURICE C. BENEVIDIZ  
Professor Emeritus  
Baruch College

GARRETT BLANDSON  
President  
AAUP

NEIL S. BUCKLEY  
President  
University of Montana

MARGARET CHANDLER  
Professor  
Columbia University

D. FRANCIS FITZ  
Exec. Vice President  
NACUBO

G. TERRY MADONNA  
President  
APSCUF

ROBERT D. HELSBY  
Professor  
Univ. of North Florida

THOMAS MARTIN  
Dir., Collective Barg. Svcs.  
Univ. of California Systemwide

BERNARD MINTZ  
Exec. Asst. to the President  
Wm. Paterson College of N.J.

CAESAR J. WARLES  
Vice Chancellor  
Faculty & Staff Relations  
California State Univ.

HAROLD R. NITMAN  
Chairman  
New York State NERB

DAVID NIXON  
Vice Chancellor  
Long Island University

IRVIN ROLLSHOOK  
President, ESC  
Vice President, AFT

DONALD SAVAGE  
Exec. Director  
CAUT, Canada

JOEL SECALL  
President  
Baruch College, CUNY

ALBERT SHANKER  
President, AFT  
AFL-CIO

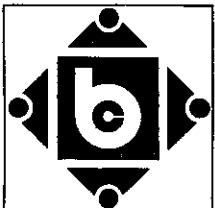
JIM WHITE  
Vice Pres. for Financial Svcs.  
AACJC

JOEL M. DOUGLAS  
Director, NCSCHED  
Baruch College, CUNY

**Volume 10 • January 1984**

**Directory of  
Faculty Contracts  
and Bargaining Agents  
In Institutions of Higher Education**

**Joel M. Douglas**  
with Lorraine De Bona



THE NATIONAL CENTER FOR THE STUDY OF COLLECTIVE BARGAINING IN  
HIGHER EDUCATION AND THE PROFESSIONS—BARUCH COLLEGE  
CITY UNIVERSITY OF NEW YORK

Copyright © 1984 in U. S. A.  
By The National Center for the Study of Collective  
Bargaining in Higher Education and the Professions  
Baruch College, City University of New York

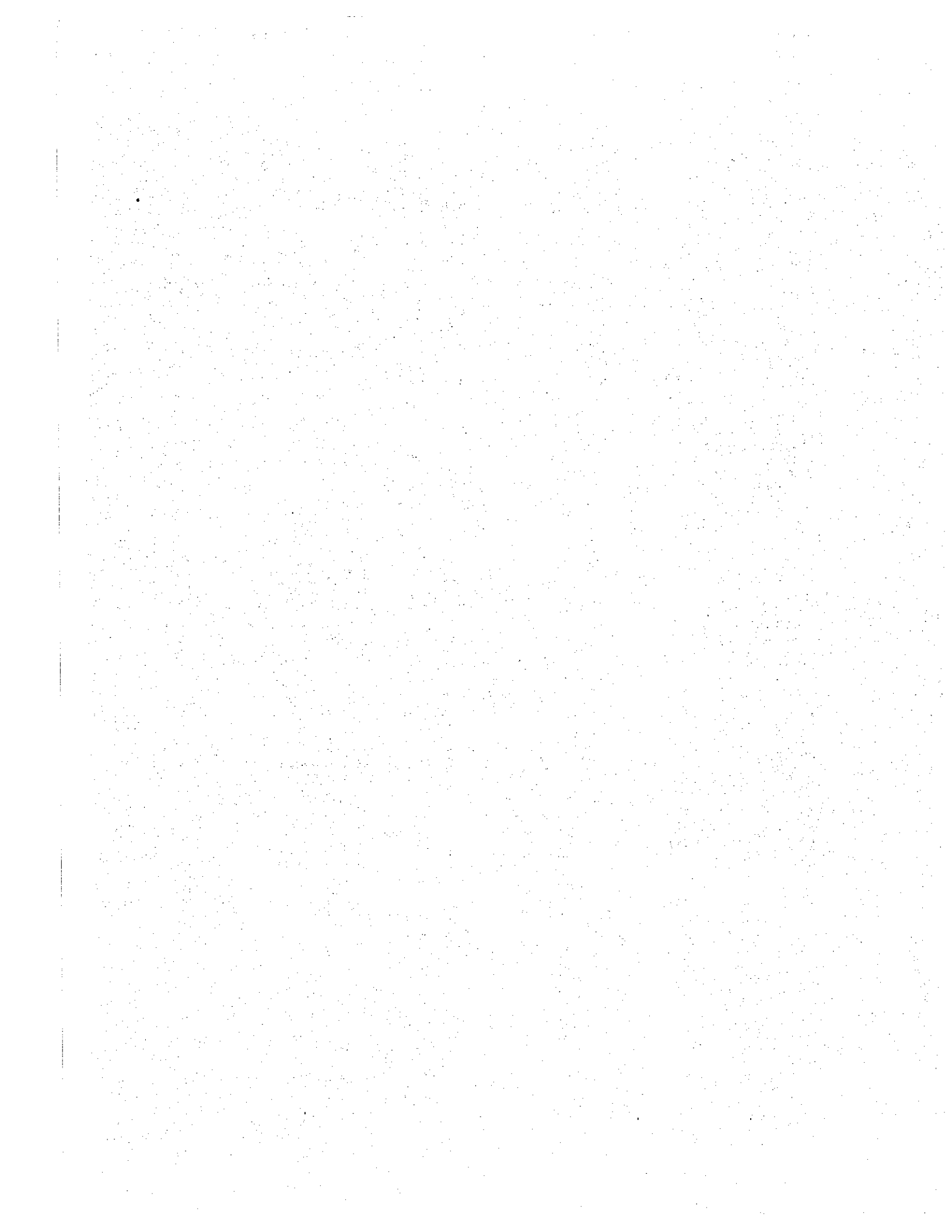
All rights reserved. No part of this publication may be reproduced, stored in a retrieval system, or transmitted in any form or by any means, electronic, mechanical, photocopying, recording, or otherwise, without the prior permission of the publisher.

Price \$12.00

ISSN 0276-7805

## TABLE OF CONTENTS

	PAGE
INTRODUCTION: UNIONIZATION AMONG FACULTY, 1983	v
FACULTY CONTRACTS AND BARGAINING AGENTS, U.S.	1
FACULTY COLLECTIVE BARGAINING AT CANADIAN UNIVERSITIES	67
SUMMARY OF ELECTIONS, U.S. - 1983	75
STATISTICAL ANALYSIS	77
Table One     - GROWTH OF UNIONIZATION IN HIGHER EDUCATION PUBLIC AND PRIVATE SECTORS - 1974-1983	
A. BARGAINING AGENTS	78
B. COLLECTIVE BARGAINING AGREEMENTS	79
Table Two     - GROWTH OF UNIONIZATION IN HIGHER EDUCATION IN TWO AND FOUR-YEAR INSTITUTIONS - 1974-1983	80
Table Three   - RECOGNIZED BARGAINING AGENTS	81
Table Four    - COLLECTIVE BARGAINING AGENTS	82
Table Five    - ANALYSIS OF BARGAINING AGENTS & COLLECTIVE BARGAINING AGREEMENTS	83
Table Six     - GEOGRAPHIC DISTRIBUTION OF BARGAINING AGENTS AND CONTRACTS	84
Table Seven   - FACULTY REPRESENTED BY CERTIFIED BARGAINING AGENTS	85
Table Eight   - STATUS OF PUBLIC SECTOR COLLECTIVE BARGAINING LEGISLATION	86
Table Nine    - SUMMARY OF DECERTIFICATIONS	87
Table Ten     - ROSTER OF INSTITUTIONS AFFECTED BY THE <u>YESHIVA</u> DECISION	88
Table Eleven   - COLLEGE CLOSINGS	90
Table Twelve   - BARGAINING AGENTS CITED IN THIS DIRECTORY	91
"NO-AGENT" VOTES, 1971-1983	92
INDEX OF UNITED STATES AND CANADIAN INSTITUTIONS CITED IN 1983 DIRECTORY	100



## UNIONIZATION AMONG COLLEGE FACULTY - 1983

### INTRODUCTION

A change in focus from campus organizing to lobbying for statewide enabling legislation appears to have been the primary thrust of faculty unions in 1983. The passage of collective bargaining bills in Ohio and Illinois attest to the success of this strategy on the part of unions.

While successful on the legislative front, however, the organizing of new faculty units was virtually non-existent. Only one new faculty bargaining agent was elected in 1983, with faculty at three institutions rejecting unionization by voting "no-agent." Additionally, five Yeshiva-related decertifications were also reported. (For a complete analysis of all faculty elections, refer to the table on "Summary of Elections - 1983.")

### AGENTS ELECTED

With the exception of the adjunct faculty at Chemeketa Community College in Oregon, no other faculty group voted to unionize in 1983. However, university librarians at the University of California systemwide did elect the AFT as their bargaining agent. In another University of California systemwide election, nurses at the hospitals and clinics elected the California Nurses Association as their agent. This marked the lowest number of newly unionized institutions on an annual basis since the National Center began to collect such data in 1973.

While the number of newly recognized agents increased by two, this was drastically offset by the decertification of five bargaining agents and institutional structural changes, bringing the total number of recognized agents to 417, a decrease of 6 from 1982. The number of reported contracts was 393, an increase of 19 from the previous year.

### "NO-AGENT" ELECTIONS

Three "no-agent" faculty elections were reported: two in the state of Oregon and one in California. At Oregon State University, an NEA/AAUP coalition was defeated with "no-agent" receiving 879 votes to 482 who supported unionization. The unit size at Oregon was 1900. This marks the second loss for the unions at Oregon State; a previous organizing attempt by the AAUP and AFT was defeated in 1977. In another Oregon election, the faculty at Umpqua Community College chose "no-agent" over the OEA/NEA. This is the third setback for unionization at Umpqua, the previous ones occurred in 1979 and 1975. Of the 65 faculty in the proposed bargaining unit, 37 voted "no-agent" while 26 supported the faculty organization.

The third "no-agent" election occurred at the University of San Francisco where faculty at the College of Professional Studies selected "no-agent" by a vote of 112-78 over the AFT. It should be noted, however, that the CFT/AFT does have bargaining unit certifications for the faculty at USF, and that this election only concerned one college within the university.

Scientists and engineers at the University of California Lawrence Livermore National Laboratories voted against a union organizing drive conducted by the Society of Professional Scientists and Engineers/California State Employees Association. The "no-agent" vote was 1,923 while 609 voted for SPSE.

It is difficult to assess the impact of the "no-agent" votes when viewing academic collective bargaining in the macro sense. Whether or not there is a uniqueness to the two Oregon elections or if this was part of an overall "no-agent" trend is difficult to assess at this time.

#### DECERTIFICATION

Faculty unions at the University of New Haven, Stephens College, Seton Hall University, Cooper Union and Ohio Northern University were decertified during 1983. All were Yeshiva related and left faculty at these institutions unprotected in terms of bargaining under the National Labor Relations Act.

The AFT had been the duly elected bargaining agent at four of the institutions while at the fifth, the NEA held bargaining rights. At four institutions contracts had been previously negotiated although none had an expiration period beyond that of the decertification date.

At the University of New Haven, the AFT had been the bargaining agent since 1979, having replaced an independent association which had organized the faculty in 1975. The initial contract at New Haven had been signed in 1976; however, a successor agreement was never reached since a Yeshiva claim was filed immediately after the U.S. Supreme Court decision. It is believed that the University of New Haven was the first institution to exercise this type of claim.

Stephens College, in Missouri, was successful in having the AFT decertified after four years as the bargaining agent. It should be noted that although an agent had been certified, no contract was ever negotiated at Stephens. The AFT also lost agent status at Seton Hall University, New Jersey, having only enjoyed bargaining rights for approximately one year. An independent faculty association had bargained at Seton Hall since 1972; however, it was replaced in 1982 by the AFT. Subsequent to the AFT being certified, the college filed its Yeshiva claim.

At Cooper Union, New York, the AFT lost agent status; however, it is expected that an appeal will be taken. The AFT and its New York State affiliate had enjoyed bargaining rights for 10 years at Cooper Union although only one contract had been negotiated. The NEA affiliate at Ohio Northern University was also decertified. It was elected in 1979 and signed only one contract there.

Although only eight hundred faculty members were directly affected by the five decertifications, the impact on private sector organizing remains substantial. Unless a union can obtain voluntary recognition status or an employer's pledge not to "Yeshiva" the faculty, it appears virtually certain that any organizing attempt will be futile. (For a complete analysis of the Yeshiva decision (NLRB v. Yeshiva University, 444 U.S. 672 (1980)), see



NCSCBHEP Newsletter, Vol. 8, No. 1; Vol. 9, No. 1; Vol. 10, No. 3; and Vol. 11, No. 3.)

Additional decertification attempts were made at three community colleges in 1983. In those elections the incumbent agents defeated the challenges and maintained certification. At Butte College, California, the CTA/NEA defeated a challenge by an independent organization by three votes, while at East St. Louis Community College, Illinois, the IFT/AFT defeated the AAUP by a vote of 24-17. In the largest of the three elections, the MTA/NEA at the Massachusetts Community College System defeated an AFT challenge by a vote of 830-483. While technically these elections are classified as decertification attempts, none of them resulted in any agent change.

## STRIKES AND LEGISLATION

### Strikes

Three strikes were reported in 1983, two of which were classified as fall "back-to-school" strikes. The faculty at Compton Community College, California, engaged in a 21-day stoppage. The AFT is the recognized bargaining agent for the 80 full-time and 30 part-time faculty in the unit. The faculty at St. Clair Community College, Minnesota, struck for three days. The NEA represents the 110 faculty in the unit. The third strike occurred at the University of Hawaii where faculty took part in a statewide coalition work stoppage which lasted for two days. The NEA/AAUP coalition represents some 2800 faculty at the nine campus system.

Strikes continue to be infrequent in academic collective bargaining. (For a complete analysis of work stoppages in higher education, the reader is referred to NCSCBHEP Newsletter, Vol. 11, No. 5.)

### Legislation

Ohio and Illinois both passed comprehensive collective bargaining acts making this the first time in five years that any state enacted enabling legislation in this area. A unique feature of both the Ohio Collective Bargaining Law, Senate Bill No. 133, and the Illinois Educational Labor Relations Act is the authorization of a limited right to strike. Preconditions have been established requiring exhaustion of all impasse procedures and giving adequate notice. Of particular interest in the Ohio statute is a provision which defines the term "supervisor" so as to forego any possibility of Yeshiva claims. Specific reference is made to faculty members of state universities and colleges. Department and division heads are classified as supervisors; ". . . however, no other faculty member or group of faculty members is a supervisor solely because the faculty member or group of faculty members participate in decisions with respect to courses, curriculum, personnel or other matters of academic policy." The Illinois Act also defines supervisor and professional employee, although not to the same extent as found in the Ohio bill. It is interesting to note the impact of the Yeshiva Decision on the legislative process in both bills.

Although no further collective bargaining laws were enacted, bills supporting enabling legislation for public employees including state universities and college systems were introduced in at least eight other

states. In all but Washington State, the bills were either killed in committee or defeated in a floor vote. In Washington, the bill passed both houses of the state legislature; however, it was vetoed by the governor. The unsuccessful bills included: Maryland (S.B. 60, H.B. 722), Virginia (S.B. 407), West Virginia (S.B. 252), Missouri (S.B. 442), Indiana (H.B. 1094), North Dakota (H.B. 1448), Washington State (S.B. 3042), and Wisconsin (S.B. 174).

Additional bills relating to public sector labor relations were also introduced; however, none provided for comprehensive enabling legislation. With the passage of the Ohio and Illinois Acts, the number of states with public sector collective bargaining statutes authorizing college faculty the right to bargaining now totals 31 plus the District of Columbia.

### SUMMARY AND CONCLUSIONS

The number of institutions engaged in academic collective bargaining with recognized bargaining units during 1983 remains relatively constant. Four hundred and seventeen bargaining agents were identified at colleges and universities engaged in collective bargaining. While this represents a decrease of 6 from the previous year, five of these were related to Yeshiva decertifications of private colleges. Additional losses occurred as a result of school mergers and closings.

While the number of reported contracts increased by 19, this is attributed to two new contracts at CSU and a decrease from 46 to 24 of agents without collective bargaining agreements.

As in the past, two-year public colleges led all institutional categories in terms of recognized bargaining agents with 272. Only 11 private two-year institutions were identified as engaging in collective bargaining activities.

The number of four-year private institutions with recognized bargaining agents continues to diminish: from 69 in 1983 to 63 in 1984. It should be noted that at the time of the Yeshiva Decision, approximately 90 private colleges were engaged in academic collective bargaining.

No significant increase was reported in public sector bargaining. Three new four-year agents were added while the number of two-year agents decreased by three.

Although legislation has been introduced to overturn Yeshiva, no changes in this area are expected in the near future. As was stated last year, the pending decisions at Boston University and Polytechnic Institute of New York should be controlling for future cases.

Thus, in 1983, we saw a shift in the strategy of union activity. Coming to grips with the reality of apparent shrinking support nationally for union organizing efforts and burdened with the additional problems associated with Yeshiva claims, unions were forced to seek legislation which would give them a more favorable climate in which to operate. Although success in this area has been limited, it would appear to be the one viable option unions must have if they are to remain an integral partner in higher education employment relationships.

## ACKNOWLEDGMENTS

The 1984 volume of the Directory of Faculty Contracts and Bargaining Agents in Institutions of Higher Education is the most comprehensive issue the Center has published to date. The growth in size and data is directly attributable to the activity generated in this field annually by our colleagues either as scholars or practitioners. Additionally, over the years your input has been given careful consideration and where feasible has been included in this publication. Thus, our research and data gathering procedures have increased extensively to reflect your concerns and interests. Regarded as one of the most accurate and authoritative compilations of agents and agreements in faculty bargaining the Directory, this year, for the first time includes data on individual campus bargaining, as well as multi-campus systems.

We are especially thankful to those advocates who served as our eyes and ears in the field and willingly shared their information with us. It is doubtful if the Directory would have been the complete product that it is if not for the reporting and continuous feedback received from the following: Steve Finner, AAUP, Sue Graebill, AAUP, Jerry Fabiano, NYEA, Joseph Hankin, Westchester Community College, Tina Head, CAUT, David Poisson, NEA, and Perry Robinson, AFT. In addition, vice presidents for administration, labor relations designees, personnel directors, union officers and other campus representatives were surveyed as to the status of collective bargaining on their campuses. To all those who replied, we thank you.

The entire staff of the Center was involved with the development, preparation, and publication of this volume. Lorraine DeBona, a researcher with the Center, was responsible for the primary information gathering and the never-ending task of updating. Her care, devotion to detail, and "stick-to-itiveness" are greatly appreciated.

Carol Faber, another researcher on our staff, assisted Lorraine in the statistical analysis and was responsible for developing the Index. Her perseverance and hard work enabled us to "get there" on schedule.

Carol Rosenberg, the primary information gatherer for the 1983 Directory, organized the multi-campus bargaining sections and served as a consultant.

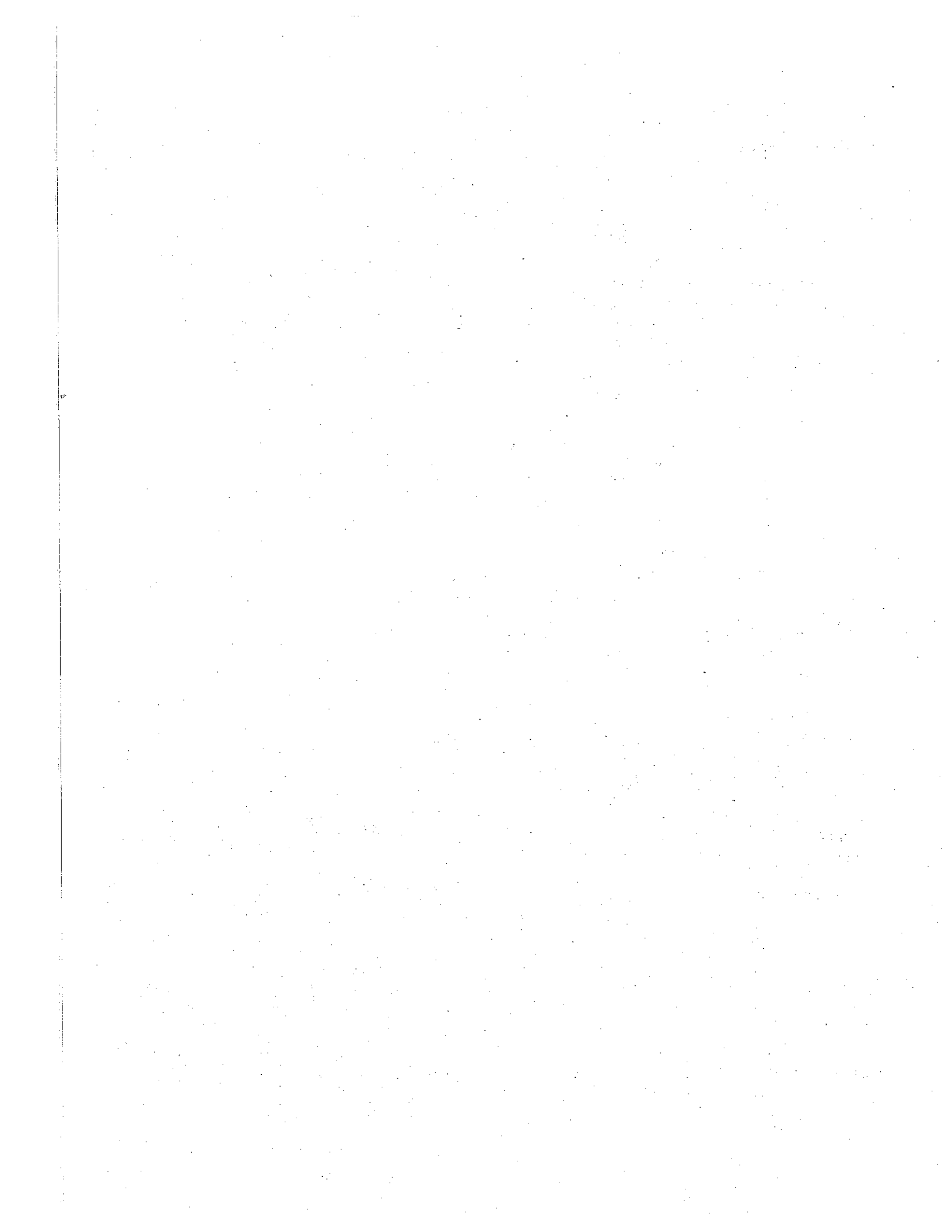
Daniel Wiener, Brenda Daniels, and Gordon Lung all pitched in along the way.

Ruby N. Hill performed a herculean task of putting the entire Directory onto our word-processing system. Not only did she design the format used, she also performed numerous editing functions as we went along. Deep appreciation is extended to her for a job well done.

Every publication that the Center has produced since our inception in 1972 has been tied together by Evan G. Mitchell, Administrative Coordinator of the Center. As she has so ably done in the past, Evan saw the project through from start to finish.

We apologize for any errors or omissions; we are pleased to make this contribution to our field.

J. M. D.



**FACULTY CONTRACTS AND BARGAINING AGENTS  
IN PUBLIC AND PRIVATE INSTITUTIONS  
IN THE UNITED STATES**



**FACULTY CONTRACTS AND BARGAINING AGENTS  
IN PUBLIC AND PRIVATE INSTITUTIONS**

Institution	Bargaining Agent+	Unit Size	Cur. Agent Elected	Initial Contract++	2/4 Year	No. of Campuses#	Contract Expiration
<b>ALASKA</b>							
University of Alaska Community College System	AFT	273	1974	1974	2	11	1/1/83
Anchorage C.C.					2		
Juneau-Douglas C.C.					2		
Kenai Peninsula C.C.					2		
Ketchikan C.C.					2		
Kodiak C.C.					2		
Kuskokwim C.C.					2		
Matanuska-Susitna C.C.					2		
Northwest C.C.					2		
Prince William Sound C.C.					2		
Sitka C.C.					2		
Tamaka Valley C.C.					2		

**ARIZONA**

Pima Community College	NEA	272	1978	1979	2	4	6/30/83
Community Campus					2		
Downtown Campus					2		
East Campus					2		
West Campus					2		

**CALIFORNIA**

Barstow Community College	NEA	65	1979	1979	2	1	6/30/83
---------------------------	-----	----	------	------	---	---	---------

Institution	Bargaining Agent+	Unit Size	Cur. Agent Elected	Initial Contract++	2/4 Year	No. of Campuses#	Contract Expiration
<b>CALIFORNIA (Cont'd.)</b>							
Butte College <sup>2</sup>	CTA/NEA	125	1978	1978	2	1	6/30/81
California State University	CFA/AAUP/NEA	18,000	1982	1983	4	19	6/30/86
Cal. St. Col.-Bakersfield					4		
Cal. St. Col.-San Bernardino					4		
Cal. St. Col.-Stanislaus					4		
Cal. St. Polytech. Univ.-Pomona					4		
Cal. St. Polytech. Univ.-San Luis Obispo					4		
Cal. St. Univ.-Chico					4		
Cal. St. Univ.-Dominguez Hills					4		
Cal. St. Univ.-Fresno					4		
Cal. St. Univ.-Fullerton					4		
Cal. St. Univ.-Hayward					4		
Cal. St. Univ.-Long Beach					4		
Cal. St. Univ.-Los Angeles					4		
Cal. St. Univ.-Northridge					4		
Cal. St. Univ.-Sacramento					4		
Humboldt St. Univ.					4		
San Diego St. Univ.					4		
San Francisco St. Univ.					4		
San Jose St. Univ.					4		
Sonoma St. Univ.					4		
o Academic Support	UPC/AFT	1,500	1982	1983	4	19	9/16/85
o Physicians Unit	UAPD	150	1982	1982	4	19	6/30/86



Institution	Bargaining Agent+	Unit Size	Cur. Agent Elected	Initial Contract++	2/4 Year	No. of Campuses#	Contract Expiration
<b>CALIFORNIA (Cont'd.)</b>							
Chabot College	NEA	240 ft 260 pt	1978	1979	2	1	6/30/84
Chaffee Community College	NEA	482	1980	---	2	1	
Citrus College	CTA/NEA	130	1977	1977	2	1	6/30/82
*Claremont Colleges	OPEIU <sup>3</sup>	Librarians		1972	4	6	None in effect
Claremont McKenna Col.					4		
Claremont Univ. Grad. School					4		
Harvey Mudd Col.					4		
Pitzer Col.					4		
Pomona Col.					4		
Scripps Col.					4		
Coast Community College District	AFT	662	1979	1980	2	3	6/30/82**
Coastline C.C.					2		
Golden West C.C.					2		
Orange Coast C.C.					2		
o Part-time	NEA	1,433	1979	1980	2	3	6/30/83**
College of the Redwoods	Ind.	120 ft 450 pt	1976	1976	2	1 <sup>4</sup>	6/30/82
College of the Sequoias	NEA	149	1976	1977	2	1	6/30/84

Institution	Bargaining Agent+	Unit Size	Cur. Agent Elected	Initial Contract++	2/4 Year	No. of Campuses#	Contract Expiration
<b>CALIFORNIA (Cont'd.)</b>							
Compton Community College	AFT	80 ft 30 pt	1978	1979	2	1	6/30/82**
Contra Costa Community College District	Ind.	500 f/pt	1977	1977	2	3	6/30/83
Contra Costa Col.					2		
Diablo Valley Col.					2		
Los Medanos Col.					2		
El Camino Community College	AFT	770 f/pt	1977	1977	2	1	6/30/84
Foothill-DeAnza Community College District	Ind.	1,200 f/pt	1977	1977	2	2	6/30/83
DeAnza Col.					2		
Foothill Col.					2		
Gavilan Community College	NEA	62 ft	1976	1976	2	1	6/30/82
Glendale Community College	AFT	415	1979	1980	2	1	6/30/82
Grossmont Community College District	NEA	480 f/pt	1977	1978	2	2	6/30/81**
Cuyamaca Col.					2		
Grossmont Col.					2		
Imperial Valley College	NEA	100	1982	---	2	1	

Institution	Bargaining Agent+	Unit Size	Cur. Agent Elected	Initial Contract++	2/4 Year	No. of Campuses#	Contract Expiration
<b>CALIFORNIA (Cont'd.)</b>							
Kern Community College District	NEA	330	1977	1977	2	3	6/30/82
Bakersfield Col.					2		
Cerro Coso Col.					2		
Porterville Col.					2		
Long Beach City College	NEA	312 ft	1979	1979	2	2	6/30/82
Liberal Arts Campus					2		
Pacific Coast Campus					2		
Los Angeles Community College System	AFT	4,800 f/pt	1976	1978	2	10	6/30/83
East L.A. Col.					2		
L.A. City Col.					2		
L.A. Harbor Col.					2		
L.A. Metropolitan Col.					2		
L.A. Mission Col.					2		
L.A. Pierce Col.					2		
L.A. Southwest Col.					2		
L.A. Trade-Tech. Col.					2		
L.A. Valley Col.					2		
West L.A. Col.					2		
Los Rios Community College System	AFT	1,297 ft	1977	1977	2	3	6/30/81**
Amer. River Col.					2		
Cosumnes River Col.					2		
Sacramento City Col.					2		

Institution	Bargaining Agent+	Unit Size	Cur. Agent Elected	Initial Contract++	2/4 Year	No. of Campuses#	Contract Expiration
Los Rios Community College System (Cont'd.)							
Campus Center Amer. Riv. Col.					2		
Marin Community College	AFT	600	1978	1980	2	2	6/30/81
Col. of Marin					2		
Indian Valley Col.					2		
Merced College	NEA	130	1976	1977	2	1	6/30/82
Monterey Peninsula Community College	NEA	320	1978	1980	2	1	6/30/82**
Mount San Antonio College	NEA	744 ft	1976	1978	2	1	12/31/84
Mount San Jacinto College	NEA	40 ft	1977	1977	2	1	6/30/82
Napa College	NEA	96ft 179 pt	1977	---	2	1	6/30/82
North Orange County Community College	NEA	550	1979	1981	2	2	6/30/83**
Cypress Col. Fullerton Col.					2		
Palo Verde Community College	NEA (AFT 1976)	18	1980	1976	2	1	9/15/82

Institution	Bargaining Agent+	Unit Size	Cur. Agent Elected	Initial Contract++	2/4 Year	No. of Campuses#	Contract Expiration
<b>CALIFORNIA (Cont'd.)</b>							
Pasadena City College	NEA	346	1979	1979	2	1	6/30/83
Peralta Community College District	AFT	500 ft 400 pt	1979	1980	2	5	6/30/84
Col. of Alameda					2		
Feather River Col.					2		
Laney Col.					2		
Merritt Col.					2		
Vista Col.					2		
<b>Rancho Santiago Community College District</b>							
	Ind.	236			2	1 <sup>5</sup>	6/30/82
o Continuing Educ. Faculty	NEA	51			2	1	6/30/82
<b>Rio Hondo Community College</b>							
	CTA/NEA	507	1979	1980	2	1	6/30/83
<b>Riverside Community College</b>							
	NEA	600	1978	1980	2	1	9/30/82
<b>Saddleback Community College</b>							
	NEA	163	1976	1976	2	1	6/30/83
o Part-time	Ind.	500			2	1	
<b>San Diego Community Colleges</b>							
	CTA/NEA	462	1977	1977	2	3	6/30/84
San Diego City Col.					2		
San Diego Mesa Col.					2		
San Diego Miramar Col.					2		

Institution	Bargaining Agent+	Unit Size	Cur. Agent Elected	Initial Contract++	2/4 Year	No. of Campuses#	Contract Expiration
<b>CALIFORNIA (Cont'd.)</b>							
San Diego Community College Adult Ed. System	AFT	120	1977	1977	2	10	6/30/84
Campus Centers:							
Claremont Mesa					2		
East San Diego					2		
Ed. Cultural Complex					2		
Harbor View					2		
Kearny Mesa					2		
Midway					2		
Mira Mesa					2		
Navajo					2		
North Shores					2		
San Francisco Community College	AFT	1,620 f/pt	1978	1979	2	2	6/30/84
City Col. of San Fran. C.C. Centers					2		
City Col. of San Fran. C.C. Centers					2		
Campus Centers:							
Alemany					2		
C.C. Skills Cntr.					2		
Downtown C.C. Cntr.					2		
Galileo C.C. Cntr.					2		
John Adams Comm. Cntr.					2		
John O'Connell C.C. Cntr.					2		
Mission C.C. Cntr.					2		
San Joaquin Delta College	CTA/NEA	580 f/pt	1977	1977	2	1	6/30/84

Institution	Bargaining Agent+	Unit Size	Cur. Agent Elected	Initial Contract++	2/4 Year	No. of Campuses#	Contract Expiration
<b>CALIFORNIA (Cont'd.)</b>							
San Jose Community College District	NEA	270 ft 690 pt	1977	1978	2	2	6/30/82
Evergreen Valley Col. San Jose City Col.					2 2		
San Mateo Community College	AFT (NEA 1977)	1,100	1982	1978	2	3	6/30/82
Canada Col. Col. of San Mateo Skyline Col.					2 2 2		
Santa Barbara City College	NEA	180	1976	1976	2	1	6/17/82
Santa Clarita C.C. District <sup>6</sup>	CTA/NEA	56 ft	1977	1978	2	1	6/30/84
Santa Monica Community College	Ind.	200 ft 400 pt	1978	1979	2	1	6/30/83
Shasta College	NEA	156 ft 75 pt	1976	1976	2	1 <sup>7</sup>	6/30/84
Sierra Joint Community College District	CTA/NEA	126 f/pt	1977	1978	2	1	6/30/83**
Solano Community College	NEA	136 ft 250 pt	1977	1977	2	1	6/30/82

Institution	Bargaining Agent+	Unit Size	Cur. Agent Elected	Initial Contract++	2/4 Year	No. of Campuses#	Contract Expiration
<b>CALIFORNIA (Cont'd.)</b>							
Southwestern College (Sweetwater C.C. Dist.)	NEA	500 f/pt	1977	1979	2	1	6/30/84
State Center Community College District	AFT	333	1977	1977	2	2 <sup>8</sup>	6/30/84
Fresno City Col.					2		
Kings River C.C.					2		
Taft College	NEA	30	1976	1977	2	1	6/30/84
University of California					4	9	
• Librarians	UFL/AFT	401	1983	---	4	9	
• Registered Nurses	CNA	4,400	1983	---	4	9	
• Santa Cruz Faculty	AAUP	437	1981	1982	4	1	6/30/84
*University of San Francisco	CFT/AFT (Ind. 1975)	241 ft	1982	1976	4	1	6/30/86
*University of San Francisco Law School	Ind.	25	1973	1974	4	1	1982/only salaries
Ventura County Community College District	AFT	385 ft 900 pt	1977	1978	2	3	6/30/82
Moorpark Col.					2		
Oxnard Col.					2		
Ventura Col.					2		
Victor Valley College	NEA	63	1976		2	1	6/30/84
West Hills College	NEA	50	1977		2	1	6/30/82



Institution	Bargaining Agent+	Unit Size	Cur. Agent Elected	Initial Contract++	2/4 Year	No. of Campuses#	Contract Expiration
<b>CALIFORNIA (Cont'd.)</b>							
Yosemite Community College District	NEA	515	1976	1978	2	2	6/30/83
Columbia Col.					2		
Modesto Jr. Col.					2		
Yuba College	NEA	155		1978	2	1	6/30/85

**COLORADO**

Colorado Community College System	NEA	736	1979	---	2	16	
Aimes C.C.					2		
Arapahoe C.C.					2		
Colorado Mountain Col.					2		
. Comm. Ed. Unit					2		
. East Campus					2		
. West Campus					2		
Colo. Northwestern Col.					2		
C.C. of Denver					2		
. Denver-Auraria C.C.					2		
. Front Range C.C.					2		
. Red Rocks C.C.					2		
Lamar C.C.					2		
Morgan C.C.					2		
Northeastern Jr. Col.					2		
Otero C.C.					2		
Pikes Peak C.C.					2		
Pueblo C.C.					2		
Trinidad St. Jr. Col.					2		

Institution	Bargaining Agent+	Unit Size	Cur. Agent Elected	Initial Contract**	2/4 Year	No. of Campuses#	Contract Expiration
<b>COLORADO (Cont'd.)</b>							
Y*Loretto Heights College	NEA	100	1972	1973	4	1	5/31/80
*Regis College	AAUP	75 ft	1973	1973	4	1	8/14/84
University of Colorado (See also no agent listing)	AFT		1979 <sup>9</sup>	---	4	4	
Univ. of Colo.-Boulder					4		
Univ. of Colo.-Colo. Springs					4		
Univ. of Colo.-Denver					4		
Univ. of Colo.-Hlth.Sci.Cntr.					4		

**CONNECTICUT**

Connecticut Community College System	Ind. (AFSCME 1976)	550	1978	1977	2	12	6/30/84
Asnuntuck C.C.					2		
Greater Hartford C.C.					2		
Housatonic Regional C.C.					2		
Manchester C.C.					2		
Mattatuck C.C.					2		
Middlesex C.C.					2		
Mohegan C.C.					2		
Northwestern Conn. C.C.					2		
Norwalk C.C.					2		
Quinebaug Valley C.C.					2		
South Central C.C.					2		
Tunxis C.C.					2		

Institution	Bargaining Agent+	Unit Size	Cur. Agent Elected	Initial Contract++	2/4 Year	No. of Campuses#	Contract Expiration
<b>CONNECTICUT (Cont'd.)</b>							
Connecticut State Univ. System	AAUP	1,200	1976	1976	4	4	8/23/84
Central Conn. St. Col.					4		
Eastern Conn. St. Col.					4		
Southern Conn. St. Col.					4		
Western Conn. St. Col.					4		
o Administrative Faculty	AFSCME		1976		4	4	6/30/84
<b>Connecticut State Technical Colleges</b>							
Greater New Haven St. Tech. Col.	AFT	205 ft	1973	1977	2	5	8/31/85
Hartford St. Tech. Col.					2		
Norwalk St. Tech. Col.					2		
Thames Valley St. Tech. Col.					2		
Waterbury St. Tech. Col.					2		
*Mitchell College	AFT	20 ft	1975	1975	2	1	6/30/86
*Post College <sup>10</sup>	PCFA	32	1978	1979	4	1	6/30/85
*Quinnipiac College	AFT	160 ft	1975	1975	4	1	6/30/84
U.S. Coast Guard Academy	AFGE	51	1975	1978	4	1	6/15/79
*University of Bridgeport	AAUP	258	1973	1974	4	1	8/31/84

Institution	Bargaining Agent+	Unit Size	Cur. Agent Elected	Initial Contract++	2/4 Year	No. of Campuses#	Contract Expiration
<b>CONNECTICUT (Cont'd.)</b>							
University of Connecticut	AAUP	1,600	1976	1977	4	6	6/30/84
Hartford					4		
Southeastern					4		
Stamford					4		
Storrs					4		
Torrington					4		
Waterbury					4		
o Non-teaching professionals	AFT	550	1976	1977	4	6	6/30/85
o Health Center	AFT	805	1978	1978	4	1	6/30/85
<b>DELAWARE</b>							
Delaware State College	AAUP	135	1977	1981	4	1	6/30/83**
University of Delaware	AAUP	750 ft	1972	1973	4	1	6/30/84
<b>DISTRICT OF COLUMBIA</b>							
*American University Adjunct Faculty	ELIFA	37	1982	---	4	1	
*Antioch College School <sup>11</sup> of Law	AFT	16 f/pt	1976	1976	4	1	9/30/83

Institution	Bargaining Agent+	Unit Size	Cur. Agent Elected	Initial Contract++	2/4 Year	No. of Campuses#	Contract Expiration
<b>DISTRICT OF COLUMBIA (Cont'd.)</b>							
University of the District of Columbia	NEA	600	1978	1980	4	3	9/30/81 (extended)
Georgia/Harvard Str. Campus					4		
Mount Vernon Sq. Campus					4		
Van Ness Campus					4		
<b>FLORIDA</b>							
Brevard Community College	UFF/NEA <sup>12</sup> (AFT) <sup>13</sup> AFT 1976 UCFF 1977)	225	1981	1981	2	3	6/30/84
Cocoa Campus					2		
Open Campus					2		
Titusville Campus					2		
Broward Community College	UFF/NEA/AAUP (UFC/AFT/AAUP 1981)	285	1981	1981	2	3	8/3/83
Central Campus					2		
North Campus					2		
South Campus					2		
Chipola Junior College	NEA	57	1976		2	1	6/30/83

Institution	Bargaining Agent+	Unit Size	Cur. Agent Elected	Initial Contract++	2/4 Year	No. of Campuses#	Contract Expiration
<b>FLORIDA (Cont'd.)</b>							
Edison Community College	AFT (FCFF 1977)	92	1976	1979	2	1	6/30/86
Florida Memorial College	UFF/NEA	40	1979		4	1	
Florida State University System	UFF/NEA (AFT 14)	5,400 ft	1976	1976	4	9	6/30/84
Florida Agric. & Mech. Univ.					4		
Florida Atlantic Univ.					4		
Florida Internat'l Univ.					4		
Florida State Univ.					4		
Univ. of Central Florida					4		
Univ. of Florida					4		
Univ. of N. Florida					4		
Univ. of S. Florida					4		
Univ. of W. Florida					4		
Hillsborough Community College	FUSA/NEA	198	1974	1974	2	3	8/20/82
Dale Mabry Campus					2		
Plant City Campus					2		
Ybor Campus					2		
Indian River Community College	AAUP	100 ft	1973	1975	2	1	7/31/84
Palm Beach Junior College <sup>15</sup>	AFT (AFT 1975 UCCFF 1977)	192	1979	1978	2	1	6/30/83

Institution	Bargaining Agent+	Unit Size	Cur. Agent Elected	Initial Contract++	2/4 Year	No. of Campuses#	Contract Expiration
<b>FLORIDA (Cont'd.)</b>							
*Saint Leo College	UFF/NEA (AFT 1976)	43	1979	1978	4	1	6/5/83
<b>HAWAII</b>							
University of Hawaii	UHPA/AAUP/ NEA	2,700 ft	1972	1975	2/4	9	6/30/83
Hilo					4		
Honolulu C.C.					2		
Kapiolani C.C.					2		
Kauai C.C.					2		
Leeward C.C.					2		
Manoa					4		
Maui C.C.					2		
West Oahu Col.					4		
Windward C.C.					2		
<b>ILLINOIS</b>							
Belleville Area College	AAUP/NEA	117 ft	1967	1967	2	1	8/84
Carl Sandburg College	NEA	58 ft	1975	---	2	1	8/31/84

Institution	Bargaining Agent+	Unit Size	Cur. Agent Elected	Initial Contract++	2/4 Year	No. of Campuses#	Contract Expiration
<b>ILLINOIS (Cont'd.)</b>							
City Colleges of Chicago (Cook County)	AFT	1,348 ft	1966	1967	2	9	7/15/84
City-wide Col.					2		
Kennedy-King Col.					2		
The Loop Col.					2		
Malcolm X Col.					2		
Olive-Harvey Col.					2		
Richard J. Daley Col.					2		
Truman Col.					2		
Wright Col.					2		
Chicago Urban Skills Inst.					2		
College of Lake County	AFT (NEA 1971)	176 ft	1973	1973	2	1	8/10/83
East St. Louis Community College	IFT/AFT	45	1980	1982	2	1	6/30/82
Highland Community College	AFT	44	1968	1968	2	1	8/22/83
Illinois Board of Governors	IFT/AFT/UPI	1,750	1976	1977	4	5	8/31/82
Chicago St. Univ.					4		
Eastern Illinois Univ.					4		
Governors St. Univ.					4		
Northeastern Univ.					4		
Western Illinois Univ.					4		



Institution	Bargaining Agent+	Unit Size	Cur. Agent Elected	Initial Contract++	2/4 Year	No. of Campuses#	Contract Expiration
<u>ILLINOIS (Cont'd.)</u>							
Illinois Central College	Ind.	193 ft 400 pt	1977	1977	2	1	7/31/83
Illinois Valley Community College							
	AFT	67 ft	1966	1966	2	1	8/82
John A. Logan College	NEA	50 ft	1972	1972	2	1	8/31/84
Joliet Junior College							
	AFT	157	1967	1967	2	1	8/31/84
Lake Land College							
	AFT	108 ft	1968	1970	2	1	9/14/81
Lewis and Clark Community College							
	NEA	72 ft	1979	1979	2	1	6/30/82
Y*Lewis University							
	Ind.	97	1975		4	1	
McHenry County College							
	NEA	55 ft	1971	1972	2	1	6/30/85
Moraine Valley Community College							
	AFT	180	1972	1972	2	1	6/30/83
Morton College							
	AFT	68 ft 200 pt	1967		2	1	8/18/83
Prairie State College							
	AFT	99 ft	1969	1969	2	1	6/82
Sauk Valley College							
	NEA	64 ft	1969	1970	2	1	6/30/84
Thornton Community College							
	AFT	135 ft	1971	1972	2	1	8/31/84

Institution	Bargaining Agent+	Unit Size	Cur. Agent Elected	Initial Contract++	2/4 Year	No. of Campuses#	Contract Expiration
<u>ILLINOIS (Cont'd.)</u>							
Triton College	Ind.	226 ft	1973		2	1	6/30/83
Waubensee Community College	AFT	78	1978	1970	2	1	6/6/82
William Rainey Harper College	AFT	210	1976	1976	2	1	8/13/84
<u>IOWA</u>							
Des Moines Area Community College	NEA	252 f/pt	1976	1976	2	3	6/30/82
Ankeny Campus					2		
Boone Campus					2		
Urban Campus					2		
Campus Center:							
Western Attendance Cntr.					2		
Eastern Iowa Community College District IX	NEA	135 f/pt	1975	1976	2	3	8/15/83
Clinton C.C.					2		
Muscatin C.C.					2		
Scott C.C.					2		
Hawkeye Institute of Technology	NEA	118 ft	1980	1981	2	1	6/30/84**
Iowa Central Community College	NEA	100 ft	1975	1976	2	1	6/30/85

Institution	Bargaining Agent+	Unit Size	Cur. Agent Elected	Initial Contract++	2/4 Year	No. of Campuses#	Contract Expiration
<u>IOWA (Cont'd.)</u>							
Iowa Lakes Community College	NEA	87 f/pt	1975	1976	2	2	6/30/82
Main Campus			2				
South Campus			2				
Iowa Western Community College	NEA	136 ft	1975	1976	2	1	8/25/84
Kirkwood Community College	NEA	164 ft	1975	1976	2	1	8/29/83
Northeast Iowa Technical Institute (Area I)	NEA	66 ft	1975	1976	2	2	7/31/84
North Campus			2				
South Campus			2				
Northwest Iowa Technical College (Area IV)	NEA	37 ft	1975	1976	2	1	6/30/82
Southeastern Community College	NEA	98 ft	1975	1976	2	2	6/30/82
North Campus			2				
South Campus			2				
Southwestern Community College	NEA	40 f/pt	1975	1976	2	1	7/31/82
*University of Dubuque	NEA	46 f/pt	1973	1973	4	1	8/84

Institution	Bargaining Agent+	Unit Size	Cur. Agent Elected	Initial Contract++	2/4 Year	No. of Campuses#	Contract Expiration
<b>IOWA (Cont'd.)</b>							
*University of Dubuque Seminary	NEA	13	1973	1974	2	1	8/31/85
University of Northern Iowa	NEA (AAUP/NEA 1976)	580 f/pt	1980	1977	4	1	6/30/83
Western Iowa Technical Community College	NEA	71 ft	1976	1978	2	1	6/30/84
<b>KANSAS</b>							
Butler County Community Junior College	NEA	76 ft	1971	1971	2	1	7/31/84
Cloud County Community Junior College	NEA	45 ft	1970	1973	2	1	8/84
Colby Community College	Ind.	49 ft	1972	1975	2	1	5/14/82
Coffeyville Community Junior College	Ind. (NEA 1980)	35	1982	---	2	1	6/30/84
Cowley County Community College	NEA	44	1969	1970	2	1	4/83 (Memo of Understanding)
Dodge City Community Junior College	Ind.	57 ft	1974	---	2	1	6/30/84

Institution	Bargaining Agent+	Unit Size	Cur. Agent Elected	Initial Contract++	2/4 Year	No. of Campuses#	Contract Expiration
<b>KANSAS (Cont'd.)</b>							
Fort Scott Community Junior College	NEA	37		1974	2	1	6/30/82
Garden City Community Junior College	NEA	65 ft	1971	1973	2	1	6/83
Hutchinson Community College	NEA	80 f/pt		1969	2	1	6/30/84
Independence Community Junior College	NEA	30	1970	1970	2	1	6/82
Johnson County Community Junior College	NEA	160 ft	1980	1981	2	1	6/30/83**
Kansas City Community Junior College	NEA	94 ft	1971	1971	2	1	6/30/84
Labette Community Junior College	NEA	35	1970	1970	2	1	8/83
Pittsburgh State University	NEA	218	1974	1978	4	1	6/30/84
Pratt Community College	NEA	30	1977	1977	2	1	6/30/83

Institution	Bargaining Agent+	Unit Size	Cur. Agent Elected	Initial Contract**	2/4 Year	No. of Campuses#	Contract Expiration
<b>MAINE</b>							
Maine Vocational Technical Institute	NEA	295		1971	2	6	6/30/83
Central Maine Voc. Tech. Institute					2		
Eastern Maine Voc. Tech. Institute					2		
Kennebec Valley Voc. Tech. Institute					2		
Northern Maine Voc. Tech. Institute					2		
Southern Maine Voc. Tech. Institute					2		
Washington Cnty Voc. Tech. Institute					2		
<b>University of Maine</b>							
	NEA	1,200 ft	1978	1979	4	7	6/30/83
Univ. of Maine-Augusta					4		
Univ. of Maine-Farmington					4		
Univ. of Maine-Fort Kent					4		
Univ. of Maine-Machias					4		
Univ. of Maine-Orono					4		
Univ. of Maine-Presque Isle					4		
Univ. of Southern Maine					4		
<b>MARYLAND</b>							
Community College of Baltimore	AFT	168 ft	1969	1970	2	2	6/30/84

Institution	Bargaining Agent+	Unit Size	Cur. Agent Elected	Initial Contract++	2/4 Year	No. of Campuses#	Contract Expiration
Community College of Baltimore (Cont'd.)							
Harbor Campus					2		
Liberty Campus					2		
Montgomery College	AAUP	355	1980	1982	2	3	9/1/85
Germentown Campus					2		
Rockville Campus					2		
Takoma Park Campus					2		
Towson State University	AAUP	500	1973		4	1	Informal agreement

**MASSACHUSETTS**

*Becker Junior College	AFT	22	1974	1975	2	2	6/30/83
Leicester Col.					2		
Worcester Col.					2		
Y*Boston University	AAUP	860 ft	1975	1979	4	1	8/31/84
Y*Curry College <sup>20</sup>	AAUP	64 ft 25 pt	1979	1981	4	1	5/84
*Emerson College	AAUP	84 ft	1975	1976	4	1	8/31/84
*Endicott College	NEA	39 ft	1973	1974	2	1	9/1/84
*Laboure Jr. College	NEA	32 ft	1975	1979	2	1	6/30/84

Institution	Bargaining Agent+	Unit Size	Cur. Agent Elected	Initial Contract++	2/4 Year	No. of Campuses#	Contract Expiration
Board of Regents of Higher Ed.							
Massachusetts Community College System	NEA/MTA/MCCC	1,600	1976	1976	2	15	6/30/83
Berkshire C.C.					2		
Blue Hills C.C.					2		
Bristol C.C.					2		
Bunker Hill C.C.					2		
Cape Cod C.C.					2		
Greenfield C.C.					2		
Holyoke C.C.					2		
Mass. Bay C.C.					2		
Massasoit C.C.					2		
Middlesex C.C.					2		
Mt. Wachusett C.C.					2		
North Shore C.C.					2		
Northern Essex C.C.					2		
Quincy Jr. Col.					2		
Quinsigmond C.C.					2		
Roxbury C.C.					2		
Springfield Tech. C.C.					2		
Massachusetts State Colleges	NEA/MTA	1,747	1977	1979	4	9	6/30/83
Bridgewater St. Col.					4		
Fitchburg St. Col.					4		
Framingham St. Col.					4		
Mass. College of Art					4		
Mass. Maritime Academy					4		
North Adams St. Col.					4		
Salem St. Col.					4		
Westfield St. Col.					4		
Worcester St. Col.					4		



Institution	Bargaining Agent+	Unit Size	Cur. Agent Elected	Initial Contract++	2/4 Year	No. of Campuses#	Contract Expiration
-------------	-------------------	-----------	--------------------	--------------------	----------	------------------	---------------------

MASSACHUSETTS (Cont'd.)

Y*Simon's Rock Early College	SRFBC/AAUP	27	1980	1981	4	1	6/30/82
Southeastern Massachusetts University	AFT	300	1970	1970	4	1	6/30/83
University of Lowell	MSP/MTA/NEA	425 ft	1970		4	1	6/30/83
University of Massachusetts <sup>24</sup>	NEA	1,643	1977	1978	4	2	6/30/83
Amherst Campus					4		
Boston Campus					4		
*Wentworth Institute of Technology	AFT	118	1973	1976	4	1	8/31/83

MICHIGAN

Y*Adrian College	NEA	56	1975	1977	4	1	
Alpena Community College	NEA	54	1965	1965	2	1	8/18/85
*Baker Junior College of Business	NEA	20 ft	1978	1978	2	1	8/31/82
Bay de Noc Community College	NEA (Ind. 1971)	46 ft	1973	1971	2	1	8/30/82

Institution	Bargaining Agent+	Unit Size	Cur. Agent Elected	Initial Contract++	2/4 Year	No. of Campuses#	Contract Expiration
<b>MICHIGAN (Cont'd.)</b>							
Central Michigan University	NEA (NEA 1969)	570	1977	1970	4	1	6/30/84
*Detroit College of Business	NEA (Ind. 1971)	17 ft	1973	1971	4	1	6/30/82
Eastern Michigan University	AAUP	600 ft	1974	1974	4	1	8/31/85
Ferris State College	NEA	507 ft	1973	1973	4	1	6/30/84
Glen Oaks Community College	NEA	28 ft	1968	1968	2	1	8/31/83
Gogebic Community College	NEA	35	1965	1965	2	1	8/15/84
Grand Rapids Junior College	Ind.	320	1965	1965	2	1	8/21/83
Henry Ford Community College	AFT	212	1965	1966	2	2	8/31/83
Dearborn Hts. Campus Main Campus					2		
Campus Center Miller-Searle Cntr.					2		
Highland Park Community College	AFT	400	1966	1967	2	1	6/30/82

Institution	Bargaining Agent+	Unit Size	Cur. Agent Elected	Initial Contract++	2/4 Year	No. of Campuses#	Contract Expiration
<b>MICHIGAN (Cont'd.)</b>							
Jackson Community College	NEA	103 f/pt	1965	1966	2	1	8/31/84
Kalamazoo Valley Community College	NEA	95	1969	1969	2	1	5/31/84
Kellogg Community College	NEA (AFT 1967)	90 ft	1968	1968	2	1	8/15/82
Y*Kendall School of Design	NEA	50	1974	---	3/4	1	
Kirtland Community College	NEA (Ind. 1969)	16 ft	1973	1971	2	1	6/30/82
Lake Superior State College	NEA	102 ft	1978	1978	4	1	9/1/83
Lansing Community College	NEA	900 f/pt	1968	1969	2	1	9/12/84
o Administrative Assn.	Ind.	60 ft	1977	1978	2	1	6/30/85
Macomb County Community College	Ind.	350 ft	1966	1967	2	2	8/19/83
Center Campus					2		
South Campus					2		
Mid-Michigan Community College	NEA	30 ft	1968	1968	2	1	8/23/83

Institution	Bargaining Agent+	Unit Size	Cur. Agent Elected	Initial Contract++	2/4 Year	No. of Campuses#	Contract Expiration
<b>MICHIGAN (Cont'd.)</b>							
Monroe County Community College	NEA	52 ft	1973	1969	2	1	8/31/83
Montcalm Community College	NEA	25 ft	1968	1968	2	1	8/15/82
Mott Community College	NEA	220	1966	1966	2	1	8/15/82
Muskegon Community College	NEA	125 ft	1965	1967	2	1	8/31/84
North Central Michigan College	NEA	35	1980	1981	2	1	8/31/84
Northern Michigan University	AAUP	319 ft	1975	1976	4	1	6/30/83
o Skills Center	NEA	37	1980		2	1	
Oakland Community College	NEA	289	1971	1966	2	4	8/31/83
Auburn Hills Campus					2		
Highland Lakes Campus					2		
Orchard Ridge Campus					2		
Southeast Campus					2		
Oakland University	AAUP	330 ft	1970	1971	4	1	8/14/85
Saginaw Valley State College	NEA	97 ft	1972	1972	4	1	6/30/84
St. Clair County Community College	NEA	110	1968	1970	2	1	8/82
Schoolcraft College	NEA	160	1968	1968	2	1	8/22/84

Institution	Bargaining Agent+	Unit Size	Cur. Agent Elected	Initial Contract++	2/4 Year	No. of Campuses#	Contract Expiration
<b>MICHIGAN (Cont'd.)</b>							
*Shaw College at Detroit	NEA	37	1975	1980	4	2	5/31/82
Flint Campus at Detroit					4		
Main Campus at Detroit					4		
*University of Detroit	NEA	183 ft	1975	1977	4	1	1/15/84
University of Michigan							
Teaching Assistants	AFT	1,600	1976	1976	4	3	8/31/82
Ann Arbor					4		
Dearborn					4		
Flint					4		
Washtenaw Community College							
	NEA	154 ft	1966	1967	2	1	8/31/84
Wayne County Community College							
	AFT	198 ft 637 pt	1970	1970	2	3	8/31/84
Downriver Region							
					2		
Eastern Region							
					2		
Northwestern Region							
					2		
Wayne State University							
	AAUP	1,415 f/pt	1972	1972	4	1	7/31/83
West Shore Community College							
	Ind.	35 f/pt	1970	1970	2	1	8/20/82
Western Michigan University							
	AAUP	872 f/pt	1975	1976	4	1	9/5/84

Institution	Bargaining Agent+	Unit Size	Cur. Agent Elected	Initial Contract++	2/4 Year	No. of Campuses#	Contract Expiration
<u>MINNESOTA</u>							
Minnesota Community College System	NEA	1,100 f/pt	1972	1973	2	14	6/30/83
Anoka-Ramsey C.C.					2		
Arrowhead C.C.					2		
Austin C.C.					2		
Brainerd C.C.					2		
Fergus-Falls C.C.					2		
Inver Hills C.C.					2		
Lakewood C.C.					2		
Minneapolis C.C.					2		
Normandale C.C.					2		
North Hennepin C.C.					2		
Northland C.C.					2		
Rochester C.C.					2		
Willmar C.C.					2		
Worthington C.C.					2		
<u>Minnesota State University System</u>							
	NEA	2,000	1975	1979	4	7	6/30/83
Bemidji St. Univ.					4		
Mankato St. Univ.					4		
Metropolitan St. Univ.					4		
Moorhead St. Univ.					4		
Saint Cloud St. Univ.					4		
Southwest St. Univ.					4		
Winona St. Univ.					4		
<u>University of Minnesota</u>							
	UMEA/NEA	329 f/pt	1980	1982	4	2	8/31/83**

Institution	Bargaining Agent+	Unit Size	Cur. Agent Elected	Initial Contract**	2/4 Year	No. of Campuses#	Contract Expiration
University of Minnesota (Cont'd.)							
Duluth Campus					4		
Waseca Campus					4		
<u>MISSOURI</u>							
Y*Cottey College	AFT	30 ft	1976	1977	2	1	8/31/85
*Park College	AFT	35	1976	1977	4	1	4/30/82
St. Louis Community College	NEA	512 ft	1978	1983	2	3	1985
Florissant Valley					2		
Forest Park					2		
Meramec					2		
<u>MONTANA</u>							
Dawson Community College	AFT	25 f/pt	1975	1975	2	1	6/30/84
Eastern Montana College	AAUP (AAUP/ AFT 1975)	144 f/pt	1978	1976	4	1	6/30/85
Miles Community College	Ind.	26	1973		2	1	6/30/83

Institution	Bargaining Agent+	Unit Size	Cur. Agent Elected	Initial Contract++	2/4 Year	No. of Campuses#	Contract Expiration
<b>MONTANA (Cont'd.)</b>							
Northern Montana College	AFT (NEA 1975)	79	1979	1976	4	1	6/30/83
University of Montana	AFT	460 f/pt	1978	1979	4	1	6/30/83
Western Montana College	NEA	36 ft	1975	1975	4	1	6/30/83

**NEBRASKA**

Central <sup>26</sup> Community College	NEA	132	1976	1976	2	3	8/14/83
Columbus-Region 1					2		
Grand Island-Region 2					2		
Hastings-Region 3					2		
Metropolitan Technical Community College	NEA	121 ft	1974	1974	2	3	6/30/83
Elkhorn Valley Main Campus					2		
South Campus					2		
Mid-Plains Technical Community College Area	NEA	85	1976	1976	2	2	1984
McCook North Platte					2		
					2		



Institution	Bargaining Agent+	Unit Size	Cur. Agent Elected	Initial Contract++	2/4 Year	No. of Campuses#	Contract Expiration
<b>NEBRASKA (Cont'd.)</b>							
Nebraska State Colleges	SCEA/NEA	400	1972		4	4	6/31/83
Chadron St. Col.					4		
Kearney St. Col.					4		
Peru St. Col.					4		
Wayne St. Col.					4		
<hr/>							
Southeast Technical Community College	NEA	175		1975	2	4	6/30/82
Beatrice Campus					2		
Fairbury Campus					2		
Lincoln Campus					2		
Milford Campus					2		
<hr/>							
University of Nebraska (Omaha)	AAUP	400	1979	1981	4	1	1982** Salaries only
<hr/>							
University of Nebraska College of Law (Lincoln)	Ind.	25	1976	---	4	1	
(See also "No Agent" Listing)							
<hr/>							
Western Technical Community College Area	NEA	70	1976	---	2	2	5/30/82
<hr/>							
Neb. Western Col.-Scottsbluff					2		
Western Neb. Tech. Col.-Sidney					2		

Institution	Bargaining Agent+	Unit Size	Cur. Agent Elected	Initial Contract++	2/4 Year	No. of Campuses#	Contract Expiration
<b><u>NEW HAMPSHIRE</u></b>							
*Franklin Pierce College	AFT	58 f/pt	1974	1974	4	1	8/31/85
Keene State College <sup>27</sup>	NEA	125 ft	1977	1979	4	1	6/30/83
<b><u>NEW JERSEY</u></b>							
Atlantic Community College	NEA	109	1968	1970	2	1	6/30/84
Bergen Community College	NEA	235 ft	1968	1969	2	1	6/30/82
*Bloomfield College	AAUP	45 f/pt	1973	1975	4	1	6/30/83
Brookdale Community College	NEA	185	1971	1974	2	1	6/30/83
Burlington County College	NEA	100	1970	1971	2	1	6/30/84
Camden County College	NEA (NEA 1968; AFT 1972)	96	1980		2	1	6/30/84
Main Campus - Blackwood					2		
Campus Center Camden					2		

Institution	Bargaining Agent+	Unit Size	Cur. Agent Elected	Initial Contract++	2/4 Year	No. of Campuses#	Contract Expiration
<b>NEW JERSEY (Cont'd.)</b>							
County College of Morris	NEA (Ind. 1974)	167	1975	1975	2	1	8/31/84
Cumberland County College	NEA	50	1968	1971	2	1	6/30/85
Essex County College	NEA	163	1968	1970	2	1	8/30/84
*Fairleigh Dickinson University	AAUP	524 f/pt	1974	1975	2/4	4	8/31/84
Edward Williams Col.					2		
Florhan-Madison Campus					4		
Rutherford Campus					4		
Teaneck Campus					4		
Gloucester County College	AFT (NEA 1968)	81 ft	1972	1969	2	1	6/30/83
Mercer County Community College	NEA	127 ft	1970	1971	2	1	6/30/83
Main Campus					2		
Campus Center					2		
Kerney Center					2		
o Technical Assistants	AFT		1980	---	2	1	6/30/83
Middlesex County College	AFT	235	1968	1968	2	1	6/30/83
*Monmouth College	AAUP (NEA 1971)	132 ft	1978	1971	4	1	6/30/82

Institution	Bargaining Agent+	Unit Size	Cur. Agent Elected	Initial Contract++	2/4 Year	No. of Campuses#	Contract Expiration
<b>NEW JERSEY (Cont'd.)</b>							
New Jersey Institute of Technology	Ind.	315	1970	1971	4	1	6/30/83
New Jersey State College System	AFT (NEA 1969)	3,200	1972	1970	4	8	6/30/83
Glassboro St. Col.					4		
Jersey City St. Col.					4		
Kean Col. of New Jersey					4		
Montclair St. Col.					4		
Ramapo Col. of New Jersey					4		
Stockton St. Col.					4		
Trenton St. Col.					4		
William Paterson Col. of NJ					4		
Ocean County College	NEA	99 ft	1968	1968	2	1	8/30/84
Passaic County Community College	NEA	54 ft	1972	1972	2	1	8/20/84
*Rider College	AAUP	248 f/pt	1973	1974	4	1	8/31/85
Rutgers State University of New Jersey	AAUP	2,516 1,150(TA)	1970	1971	4	3	6/30/86
Camden Campus					4		
New Brunswick Campus					4		
Newark Campus					4		
o Part-time	Ind.	125	1978		4	3	
Salem Community College	NEA	32	1975	1976	2	1	6/30/82

Institution	Bargaining Agent+	Unit Size	Cur. Agent Elected	Initial Contract++	2/4 Year	No. of Campuses#	Contract Expiration
<u>NEW JERSEY (Cont'd.)</u>							
Somerset County College	AFT (NEA)	80	1973		2	1	6/30/84
<u>*Union County College<sup>28</sup></u>							
Main Campus--Cranford	AAUP	180 ft	1974	1975	2	2	8/31/84
Scotch Plains Campus					2		
Campus Center							
Elizabeth Skills Center					2		
<u>University of Medicine and Dentistry of New Jersey</u>							
	AAUP	969 ft	1972	1973	4	5	6/30/83
Grad. School of Biomedical Sciences					4		
New Jersey Dental School					4		
New Jersey Medical School					4		
New Jersey School of Osteopathic Medicine					4		
Rutgers Medical School					4		
<u>NEW YORK</u>							
*Adelphi University <sup>29</sup>	AAUP	400 f/pt	1972	1973	4	1	8/31/84

Institution	Bargaining Agent+	Unit Size	Cur. Agent Elected	Initial Contract++	2/4 Year	No. of Campuses#	Contract Expiration
<b>NEW YORK (Cont'd.)</b>							
Adirondack Community College	NYSUT/ AFT (ACCF) 30	90	1978	1970	2	1	8/31/86
*Bard College	AAUP	65	1972	1973	4	1	6/30/84
Broome Community College	NYEA/ NEA(AFT 1969)	180	1976	1969	2	1	8/31/86
Cayuga County Community College	NYEA/ NEA (NEA 1970; ACCF 1972)	85 ft	1978	1970	2	1	8/31/86
City University of New York	PSC/ AAUP/ AFT	9,525 ft 4,996 pt	1969	1969	2/4	20	8/31/84
Baruch College					4		
Bor. of Manhattan C.C.					2		
Bronx C.C.					2		
Brooklyn College					4		
City College					4		
College of Staten Island					2/4		
. St. George's Campus					2		
. Sunnyside Campus					4		
Grad. School & Univ. Center					4		
Hostos C.C.					2		
Hunter College					4		
John Jay Col. of Criminal Justice					4		
Kingsborough C.C.					2		

Institution	Bargaining Agent+	Unit Size	Cur. Agent Elected	Initial Contract++	2/4 Year	No. of Campuses#	Contract Expiration
City University of New York (Cont'd.)							
LaGuardia C.C.					2		
Lehman College					4		
Medgar Evers College					4		
Mt. Sinai School of Medicine					4		
New York City Tech. College					2		
Queens College					4		
Queensborough C.C.					2		
York College					4		
Clinton Community College	NYEA/NEA (ACCF 1972)	55 ft	1978	1973	2	1	8/31/83
Columbia Greene Community College	NYEA/ NEA (NYSUT/ AFT 1971)	44 f/pt	1979	1971	2	1	8/31/85
Community College of the Finger Lakes	NYEA/ NEA (ACCF 1974)	111 ft	1978	1975	2	1	8/31/86
Cornell University ILR <sup>32</sup>	NYSUT	200 pt	1981	1981	4	2	8/31/83**
Long Island Campus New York City Campus					4		
					4		

Institution	Bargaining Agent+	Unit Size	Cur. Agent Elected	Initial Contract++	2/4 Year	No. of Campuses#	Contract Expiration
<b>NEW YORK (Cont'd.)</b>							
*Dowling College	NYSUT/ AFT (AAUP 1969)	72	1978	1979	4	1	8/31/86
Dutchess Community College	NYSUT/ AFT	175	1968	1969	2	1	8/31/83
*D'Youville College	AAUP	73 ft	1976	1977	4	1	8/31/82
Erie Community College	NYEA/ NEA (NEA 1971; ACCF 1972)	220	1978	1978	2	3	8/31/83
City Campus					2		
North Campus					2		
South Campus					2		
Fashion Institute of Technology	AFT (NYSUT/ AFT)	350 f/pt	1976		2	1	8/31/82
*Fordham University Law School (See also "No Agent" Listing)	Ind.	26	1971	---	4	1	
Fulton-Montgomery Community College	NYEA/NEA (NEA 1969; ACCF 1972)	70 ft	1978	1969	2	1	8/31/86
Genesee Community College	NYEA/NEA (NEA 1970; ACCF 1972)	180 ft	1978	1970	2	1	8/31/84



Institution	Bargaining Agent+	Unit Size	Cur. Agent Elected	Initial Contract++	2/4 Year	No. of Campuses#	Contract Expiration
<b>NEW YORK (Cont'd.)</b>							
Herkimer County Community College	Ind.	65-70	1975	1977	2	1	8/31/85
*Hofstra University	AAUP	450 f/pt	1973	1974	4	1	8/31/85
Hudson Valley Community College	Ind. (NYEA/NEA NEA 1969; ACCF 1972)	225 ft	1983	1969	2	1	Contract extended 1986-wage reopener
Hudson Valley C.C.					2		
Campus Center Cpt1 District Educational Opportunity Center					2		
Jamestown Community College	Ind. (NEA 1970)	120	1972	1970	2	1	8/31/84
Main Campus					2		
Campus Center Cattaraugus Center					2		
Jefferson Community College	NYEA/NEA	68 ft	1975	1969	2	1	8/31/85
*Long Island University- Brooklyn Center	AFT (AFT 1970)	250	1976	1972	4	1	8/31/83
* o College of Pharmacy	AAUP	30	1978	1979	4	1	10/31/86

Institution	Bargaining Agent+	Unit Size	Cur. Agent Elected	Initial Contract++	2/4 Year	No. of Campuses#	Contract Expiration
<b>NEW YORK (Cont'd.)</b>							
Y*Long Island University-- C.W. Post Center	AFT (NYSUT (1973))	350	1976	1975	4	1	8/31/85
o Adjunct Faculty	NYEA/NEA	1,000	1978	1979	4	1	10/31/83
Y*Long Island University-- Southampton Center	AFT (NYSUT (1973))	72	1976	1975	4	1	8/31/84
*Marymount College	AAUP	60	1976	1977	4	1	8/31/84
Mohawk Valley Community College	NYSUT/AFT	140 ft	1972	1972	2	1	8/31/84
Monroe Community College	NYSUT/AFT	360 f/pt		1968	2	1	8/31/84
Nassau Community College	NYSUT/AFT (Ind.)	500	1976	1969	2	1	8/31/85
o Adjunct Faculty	NYSUT/AFT	700	1973	1974	2	1	8/31/80
*New York Institute of Technology	AAUP	250	1970	1971	4	2	8/31/83
New York City Campus Old Westbury--Main Campus					4	4	

Institution	Bargaining Agent+	Unit Size	Cur. Agent Elected	Initial Contract++	2/4 Year	No. of Campuses#	Contract Expiration
<b>NEW YORK (Cont'd.)</b>							
*New York University Law School (See also "No Agent" Listing)	Ind.		1973	---	4	1	
Niagara County Community College	NYEA/NEA (ACCF)	150	1978	1969	2	1	8/31/86
*Niagara University	Ind.		1975	1979	4	1	8/31/82
North Country Community College	NYEA/NEA (NEA 1969; ACCF 1972)	38 ft	1978	1970	2	1	8/31/85
Onondaga Community College	NYSUT/AFT	200	1967		2	1	8/31/83
Orange County Community College	NYEA/NEA (NEA 1969; ACCF 1972)	125	1978	1969	2	1	8/31/84
o Staff & Chairmen	Ind.	55	1969	1969	2	1	8/31/84
Polytechnic Institute of New York	AAUP	220	1971	1973	4	3	5/31/80
Brooklyn Farmingdale Westchester					4		
					4		
					4		

Institution	Bargaining Agent+	Unit Size	Cur. Agent Elected	Initial Contract++	2/4 Year	No. of Campuses#	Contract Expiration
<b>NEW YORK (Cont'd.)</b>							
Y*Pratt Institute	AFT (AFT 1971; NYSUT)	120 ft 350 pt	1971	1972	4	3	8/31/83
Brooklyn Pratt Manhattan Center Pratt Phoenix Center					4 4 4		
Rockland Community College	NYSUT/AFT	145	1969		2	1	8/31/81
*St. John's University	AAUP/Ind.	650	1970	1970	4	2	6/30/85
Queens Staten Island					4 4		
Schenectady County Community College	NYEA/NEA (NEA 1970; ACCF 1972)	51 ft	1978	1971	2	1	8/31/85
State University of New York	UUP/ <sup>34</sup> AFT (NYSUT 1971; UUP/AFT 1976)	16,200 ft	1978	1971	2/4	34	6/30/82
Agriculture & Technical Cols. Alfred Canton Cobleskill Delhi Farmingdale Morrisville					2 2 2 2 2 2 2		

Institution	Bargaining Agent+	Unit Size	Cur. Agent Elected	Initial Contract**	2/4 Year	No. of Campuses#	Contract Expiration
State University of New York (Cont'd.)							
Coll. of Agric. and Life Sci. at Cornell Univ.					4		
Coll. of Ceramics at Alfred Univ.					4		
Coll. of Environmental Sci. and Forestry at Syracuse					4		
Coll. of Human Ecology at Cornell Univ.					4		
Coll. of Technology at Utica/Rome					4		
Coll. of Veterinary Med. at Cornell Univ.					4		
Empire State College					4		
Maritime Coll. at Fort Schuyler					4		
School of Indus. & Labor Rels. at Cornell Univ.					4		
State University Colleges					4		
Brockport					4		
Buffalo					4		
Cortland					4		
Fredonia					4		
Geneseo					4		
New Paltz					4		
Old Westbury					4		
Oneonta					4		
Oswego					4		
Plattsburgh					4		
Potsdam					4		
Purchase					4		
State University of New York					4		
Albany					4		
Binghamton					4		

Institution	Bargaining Agent+	Unit Size	Cur. Agent Elected	Initial Contract++	2/4 Year	No. of Campuses#	Contract Expiration
State University of New York (Cont'd.)							
Buffalo (& Hlth. Sci. Center)					4		
Stony Brook (& Hlth. Sci. Center)					4		
Medical Centers					4		
Coll. of Optometry at New York City					4		
Downstate Med. Center at Brooklyn					4		
Upstate Med. Center at Syracuse					4		
Suffolk County Community College	NYSUT/AFT	430	1970	1970	2	3	8/31/84
Eastern Campus (Riverhead)					2		
Selden Campus					2		
Western Campus (Brentwood)					2		
o Guild of Administrative Offices	AFSCME	80	1970	1970	2	3	8/31/84
Sullivan County Community College	NEA (ACCF 1974)	112	1978	1976	2	1	8/31/83
o Professional Staff	NEA					1	8/31/83
*Taylor Business Institute	AFT	65	1969	1970	2	1	6/30/83
Tompkins-Cortland Community College	NYEA	78	1982	1983	2	1	1986

Institution	Bargaining Agent+	Unit Size	Cur. Agent Elected	Initial Contract++	2/4 Year	No. of Campuses#	Contract Expiration
<b>NEW YORK (Cont'd.)</b>							
*Trocaire College	Ind.	55 ft 10 pt	1974	1981	2	1	1983
Ulster County Community College	NYEA/NEA (NEA 1970; ACCF 1972)	90	1978	1970	2	1	8/31/86
U.S. Merchant Marine Academy	AFGE	75	1978	1968	4	1	1974
*Utica College of Syracuse University	AAUP	105 ft	1976	1977	4	1	8/31/84
Westchester Community College	NYSUT/AFT	210	1969	1969	2	1	8/31/85

**OHIO**

Cuyahoga Community College District	AAUP	432 ft	1977	1979	2	3	9/1/83
Eastern Campus					2		
Metropolitan Campus					2		
Western Campus					2		
*Dyke College	AFT	24 ft	1975	1976	4	1	8/31/85
Kent State University	AAUP <sup>35</sup> (AAUP/NEA 1975)	660 ft	1979	1978	2/4	7	9/16/83

Institution	Bargaining Agent+	Unit Size	Cur. Agent Elected	Initial Contract++	2/4 Year	No. of Campuses#	Contract Expiration
Kent State University (Cont'd.)							
Ashtabula Regional Campus					2		
East Liverpool Regional Campus					2		
Main Campus					4		
Salem Regional Campus					2		
Stark County Regional Campus					2		
Trumbull Regional Campus					2		
Tuscarawas Regional Campus					2		
Lake County Community College	NEA	114 ft	1978	1978	2	1	8/31/85
Northwest Technical College	NEA		1975		2	1	1/1/82
Shawnee State Community College	NEA	59 ft	1975	1976	2	1	6/30/83
University of Cincinnati	AAUP	1,575	1975	1976	2/4	4	8/31/82
Main Campus-University Col.					4		
Campus Centers							
Clermont General & Tech. College					2		
College of Applied Science					2		
Raymond Walters College					2		
Y*Wilberforce University	AAUP	54 ft	1979	1979	4	1	8/31/86
Youngstown State University	NEA	395 ft	1972	1973	2/4	1	6/14/86



Institution	Bargaining Agent+	Unit Size	Cur. Agent Elected	Initial Contract++	2/4 Year	No. of Campuses#	Contract Expiration
<b>OREGON</b>							
Blue Mountain Community College	NEA	68 ft	1975	1976	2	1	6/30/84
Central Oregon Community College	Ind./NEA (Ind. 1975)	68 ft 5 pt	1979	1977	2	1	6/30/83
Chemeketa Community College	NEA	222 f/pt	1974	1974	2	1	6/30/85
Clackamas Community College	NEA	155 ft	1975	1973	2	1	6/30/83
Clatsop Community College	NEA	46 ft	1975	1975	2	1	6/30/81
Lane Community College	NEA	289 ft	1974	1974	2	1	6/30/83
Mount Hood Community College	Ind.	161 ft	1975	1976	2	1	8/31/85
o Part-time	OEA	400	1982	---	2	1	
Portland Community College	AFT	370	1974	1975	2	3	6/30/85
Cascade Campus					2		
Rock Creek Campus					2		
Sylvania Campus					2		
Campus Centers							
Ross Island Center					2		
Southeast Center					2		
Stadium Center					2		
Portland State University	AAUP	660	1978	1979	4	1	6/30/83
o Part-time	AFT	200	1978	1979	4	1	6/30/85

Institution	Bargaining Agent+	Unit Size	Cur. Agent Elected	Initial Contract++	2/4 Year	No. of Campuses#	Contract Expiration
<b>OREGON (Cont'd.)</b>							
Rogue Community College	NEA	57 ft	1975	1975	2	1	6/30/84
Southern Oregon State College	Ind.	203 ft	1973	1975	4	1	6/30/83
Southwestern Oregon Community College	AFT	65 f/pt	1974	1974	2	1	6/30/84
University of Oregon Graduate Teaching Fellows (See also "No Agent" Listing)	AFT	750	1977	1978	2	1	6/30/83
Western Oregon State College	AFT	200 f/pt	1977	1979	4	1	6/30/83
*Western States Chiropractic College	Ind./AFT	20 ft 6 pt	1978	1979	4	1	6/30/84
<b>PENNSYLVANIA</b>							
Antioch College <sup>38</sup>	NEA	24	1980	---	4	1	---
Bucks County Community College	AFT	192	1971	1972	2	1	8/15/84
Community College of Allegheny County	AFT	370 ft	1971	1972	2	4	8/25/83
Allegheny Campus Boyce Campus					2	2	

Institution	Bargaining Agent+	Unit Size	Cur. Agent Elected	Initial Contract++	2/4 Year	No. of Campuses#	Contract Expiration
Community College of Allegheny County (Cont'd.)							
North Campus (Pittsburgh)					2		
South Campus (West Mifflin)					2		
Community College of Beaver County	NEA (AFT 1970)	60 ft	1973	1972	2	1	1/15/82
Community College of Philadelphia							
o Adjunct	AFT	324 ft	1970	1970	2	1	8/31/85
	AFT	600 pt	1981	---	2	1	
Delaware County Community College							
	NEA	100 ft	1974	1975	2	1	8/20/82
*Lackawanna Junior College	NEA	28 ft	1979		2	1	12/31/83
Lehigh County Community College							
	NEA	70 ft	1970	1972	2	1	8/31/85
Lincoln University	AAUP	70 ft	1972	1973	4	1	6/30/83
Luzerne County Community College							
	NEA	80 ft	1971	1971	2	1	8/31/85
Montgomery County Community College	PAFT/AFT (AAUP 1979)	155 ft	1982	1980	2	1	8/31/85**
*Moore College of Art	AFT	40 ft 40 pt	1971	1971	4	1	8/31/85

Institution	Bargaining Agent+	Unit Size	Cur. Agent Elected	Initial Contract++	2/4 Year	No. of Campuses#	Contract Expiration
<b>PENNSYLVANIA (Cont'd.)</b>							
Northampton County Area Community College	AFT	102	1976	1977	2	1	6/30/86
Pennsylvania State College and University System	APSCUF/AAUP/AFT (NEA 1971; Ind. 1977)	5,000 f/pt	1979	1971	4	14	6/30/84
Bloomsburg St. Col.					4		
California St. Col.					4		
Cheyne St. Col.					4		
Clarion St. Col.					4		
East Stroudsburg St. Col.					4		
Edinboro St. Col.					4		
Indiana Univ. of Penn.					4		
Kutztown St. Col.					4		
Lock Haven St. Col.					4		
Mansfield St. Col.					4		
Millersville St. Col.					4		
Shippensburg St. Col.					4		
Slippery Rock St. Col.					4		
West Chester St. Col.					4		
<hr/>							
Reading Area Community College	AFT	35	1974	1975	2	1	6/30/85
*Robert Morris College	AFT	75 ft	1974	1975	4	1	4/12/83
*Spring Garden College	AFT	50 ft	1979	1979	4	1	8/31/84
Temple University	AAUP	1,325 ft	1972	1973	4	3	6/30/80

Institution	Bargaining Agent+	Unit Size	Cur. Agent Elected	Initial Contract++	2/4 Year	No. of Campuses#	Contract Expiration
Temple University (Cont'd.)							
Ambler Campus					4		
Philadelphia Campus					4		
Tyler Sch. of Art Campus					4		
Temple University Law School	Ind.	39 ft	1973	1973	4	1	1982 Salaries Only
University of Pittsburgh Medical School (See also "No Agent" Listing)	Ind.	587 ft 62 pt	1976	---	4	1	
*University of Scranton	Ind.	160 ft 20 pt	1974	1974	4	1	8/19/83
Westmoreland County Community College							
Community College	NEA	65 ft	1972	1972	2	1	8/31/85
Williamsport Area Community College							
Community College	NEA	168 ft	1971	1972	2	1	8/84
<b>RHODE ISLAND</b>							
*Bryant College of Business Administration	AFT	98 ft 155 pt	1967	1967	4	1	7/31/86
Community College of Rhode Island	NEA	300 f/pt	1972	1972	2	2	6/30/83

Institution	Bargaining Agent+	Unit Size	Cur. Agent Elected	Initial Contract++	2/4 Year	No. of Campuses#	Contract Expiration
Community College of Rhode Island (Cont'd.)							
Lincoln Campus			2				
Warwick Campus			2				
Rhode Island College	AFT	360 ft	1972	1972	4	1	1985
*Rhode Island School of Design	NEA	90 ft	1978	1979	4	1	6/30/84
o Adjunct	NEA	40 pt	1980		4	1	
*Roger Williams College	NEA	93 ft 26 pt	1972	1973	4	3	6/30/83
Bristol Campus					4		
Main Campus					4		
Providence Branch					4		
University of Rhode Island	AAUP	699	1971	1972	4	1	6/30/83
<b>SOUTH DAKOTA</b>							
*National College of Business	NEA	40 ft	1976	1977	4	1	8/31/84
South Dakota Board of Regents System	NEA	1,250 ft	1977	1979	4	9	6/30/84
Black Hills St. Col.					4		
Dakota St. Col.					4		
Main Campus-Vermillion					4		
Northern St. Col.					4		

Institution	Bargaining Agent+	Unit Size	Cur. Agent Elected	Initial Contract++	2/4 Year	No. of Campuses#	Contract Expiration
South Dakota Board of Regents System (Cont'd.)							
S.D. School for the Deaf					4		
S.D. Sch. for the Visually Handicapped					4		
S.D. Sch. of Mines and Technol.					4		
S.D. State University					4		
Univ. of S.D.-Springfield					4		

VERMONT

*Goddard College <sup>41</sup>	AFT	7 ft	1975	1976	4	1	3/31/81
Vermont State Colleges	AFT	232	1973	1975	2/4	5	6/3/81
Castleton St. Col.					4		
C.G. of Vermont					2		
Johnson St. Col.					4		
Lyndon St. Col.					4		
Vermont Tech. Col.					2		

VIRGINIA

*Marymount College of Virginia	NEA	51 f/pt	1975	1975	4	1	8/31/84
--------------------------------	-----	---------	------	------	---	---	---------

Institution	Bargaining Agent+	Unit Size	Cur. Agent Elected	Initial Contract++	2/4 Year	No. of Campuses#	Contract Expiration
<b>WASHINGTON</b>							
Bellevue Community College	NEA	250 ft	1972		2	1	8/30/82
Big Bend Community College	AFT (Ind./NEA 1965)	50	1975	1972,	2	1	6/80
Clark College	NEA (Ind.)	65	1974	1964	2	1	9/1/82
Columbia Basin Community College	NEA	95 f/pt	1972	1973	2	1	6/30/82
Community College District XII <sup>42</sup>	NEA	68	1968	1974	2	2	6/30/85
Centralia Col.					2		
Olympia Tech. C.C.					2		
Campus Center Garrett Heyns Ed. Cntr.					2		
Edmonds Community College <sup>43</sup>	AFT (Ind. 1969)	250 f/pt	1975	1976	2	1	6/30/85
Everett Community College <sup>44</sup>	AFT (Ind. 1969)	116 ft 140 pt	1975	1976	2	1	6/30/85
Fort Steilacoom Community College	SEIU (NEA 1969)	96 ft 300 pt	1981	1969	2	1	9/1/82



Institution	Bargaining Agent+	Unit Size	Cur. Agent Elected	Initial Contract++	2/4 Year	No. of Campuses#	Contract Expiration
<u>WASHINGTON (Cont'd.)</u>							
Grays Harbor College	NEA	50	1968	---	2	1	Informal Agreement
Green River Community College	AFT	108 ft (90 pt)	1972	1973	2	1	8/20/83
Highline Community College	NEA	130 ft 150 pt	1965	1969	2	1	8/85
Lower Columbia College	NEA	72	1967	1972	2	1	6/30/80
Olympic College	NEA	375 f/pt	1964		2	1	6/30/83
Peninsula College	NEA	43 ft 65 pt	1967	1980	2	1	6/1/83
Seattle Community College District VI	AFT	380	1968	1968	2	3	9/1/85
Central Campus					2		
North Campus					2		
South Campus					2		
Shoreline Community College	AFT (NEA 1970)	302 f/pt	1974	1975	2	1	6/30/86
Skagit Valley College	NEA	75 ft 138 pt	1965	1969	2	1	6/30/86
Spokane Falls Community College District XVII	NEA	322 f/pt	1970	1977	2	2	8/31/81

Institution	Bargaining Agent+	Unit Size	Cur. Agent Elected	Initial Contract++	2/4 Year	No. of Campuses#	Contract Expiration
Spokane Falls Community College District XVII (Cont'd.)							
Spokane C.C.			2				
Spokane Falls C.C.			2				
Tacoma Community College	AFT	73 ft 244 pt	1972	1973	2	1	6/19/85
University of Washington Nursing Staff	Ind.	166			4	1	9/8/80
Walla Walla Community College	NEA	90	1968	1970	2	1	6/30/82
Wenatchee Valley College	NEA	65 ft 100 pt	1965	1975	2	1	6/30/85
Whatcom Community College	AFT	125 f/pt	1975	1976	2	1	8/31/82
Yakima Valley College	AFT (NEA 1971; AFT 1973)	375 f/pt	1978	1973	2	1	6/7/85

WISCONSIN

Area Vocational Technical & Adult Education District I	AFT	165	1967	1969	2	3	6/30/82
--	-----	-----	------	------	---	---	---------

Institution	Bargaining Agent+	Unit Size	Cur. Agent Elected	Initial Contract++	2/4 Year	No. of Campuses#	Contract Expiration
Area Vocational Technical & Adult Education District I (Cont'd.)							
Chippewa Falls Adult & Voc. School					2		
District I Tech. Inst.					2		
Menomonie Adult & Voc. School					2		
Blackhawk Vocational Technical Institute	AFT	85	1972	1974	2	1	6/30/82
Fox Valley Technical Institute	NEA	200	1968	1969	2	2	6/30/80
Fox Valley Tech. Inst.- Appleton					2		
Fox Valley Tech. Inst.- Oshkosh					2		
Gateway Technical Institute	WEA (AFT 1972)	160	1982	1973	2	4	6/30/82
Gateway Aviation Cntr.-Kenosha					2		
Gateway Tech.-Elkhorn					2		
Gateway Tech.-Kenosha					2		
Gateway Tech.-Racine					2		
Lakeshore Technical Institute	NEA	105 ft	1968	1968	2	1	6/30/83
Madison Area Vocational & Technical College	AFT	375	1969	1969	2	5	6/30/82

Institution	Bargaining Agent+	Unit Size	Cur. Agent Elected	Initial Contract++	2/4 Year	No. of Campuses#	Contract Expiration
Madison Area Vocational & Technical (Cont'd.)							
Mad. Area Tech. Col.-Ft. Atkinson					2		
Mad. Area Tech. Col.-Madison					2		
Mad. Area Tech. Col.-Portage					2		
Mad. Area Tech. Col.-Reedsburg					2		
Mad. Area Tech. Col.-Watertown					2		
Mid-State Technical Institute	NEA	73	1970	1970	2	3	8/15/82
Marshfield					2		
Stevens Point					2		
Wisconsin Rapids					2		
Milwaukee Area Technical College							
Milwaukee Campus	AFT	650	1963	1967	2	4	6/30/83
North Campus					2		
South Campus					2		
West Campus					2		
Moraine Park Technical Institute							
Beaver Dam Campus	AFT	140 ft	1969	1969	2	3	6/30/83
Fond du Lac Campus					2		
West Bend Campus					2		
North Central Technical Institute							
Main Campus-Wausau	NEA	138	1969	1969	2	2	6/30/82
Satellite-Antigo					2		

Institution	Bargaining Agent+	Unit Size	Cur. Agent Elected	Initial Contract++	2/4 Year	No. of Campuses#	Contract Expiration
<b>WISCONSIN (Cont'd.)</b>							
Northeast Wisconsin Technical Institute	AFT	178	1967	1967	2	3	6/30/83
Green Bay Campus					2		
Marinette Campus					2		
Sturgeon Bay Campus					2		
*Northland College	Ind.	38 ft	1975	1979	4	1	12/31/85
Southwest Wisconsin Technical Institute	Ind.	86 f/pt	1972	1978	2	1	6/30/83**
University of Wisconsin-Madison Teaching Assistants <sup>46</sup>	TAA/AFT	1,600	1969	1970	4	1	8/28/79
Waukesha County Technical Institute	NEA	150 ft 377 pt	1967	1972	2	2	7/31/83
Menomonee Falls Campus Waukesha Campus					2 2		
Western Wisconsin Technical Institute	AFT (Ind. 1966)	190	1976	1977	2	1	6/30/83
Wisconsin Indianhead VTAE District	AFT	144	1972	1972	2	4	6/30/83
Ashland Campus					2		
New Richmond Campus					2		
Rice Lake Campus					2		
Superior Campus					2		
<b>GUAM</b>							
University of Guam	GFT/AFT				4	1	1980

## FOOTNOTES

<sup>+</sup> As long as a certificate of recognition is in effect, the institution is designated as having a bargaining agent, even if no collective bargaining has ever taken place. No distinction is made between agent elections and/or voluntary recognition.

<sup>++</sup> Three dashes (---) in this column indicate that no contract has been signed, according to available information.

<sup>#</sup> For purposes of this study, the National Center for Education Statistics' (NCES) definition of a branch campus, along with institutional self-reporting, was used. NCES defines branch campuses as those possessing the following characteristics: a permanent administration, offer programs at least two years in length, located in a community different from parent institutions so as not to be within commuting distance.

\* Private institution.

\*\* First contract between parties.

<sup>Y</sup> College and universities that have exercised a Yeshiva-like claim.

1. Sources for this publication: communication with institutions, faculty organizations, The Chronicle of Higher Education, Higher Education Daily, and Government Employee Relations Report. Data on bargaining unit size, date of first contract and number of campuses have been obtained from the institutions and agents.

ft indicates full-time, pt part-time.

2. The recognized bargaining agent, CTA/NEA defeated a decertification attempt by an Independent association. See Summary of Elections, 1983.

3. Independent agent. Certification covers professional and non-professional librarians.

4. Includes two educational centers.

5. Includes five off-campus locations.

6. Santa Clarita Community College District encompasses the College of the Canyons, listed in previous Directories.

7. Includes eight outreach centers.

8. Includes three satellite centers.

9. See "No-Agent" listing.

10. PCFA now independent; formerly affiliated with AAUP.

11. Affiliated with Antioch University of Yellow Springs, Ohio.

12. In 1982, AFT dechartered UFF; UFF then affiliated with NEA.
13. Members of three Florida unions representing Florida State University System (UFF), several community colleges (UCCFF), and faculty at two private colleges merged their organization into the United Faculty of Florida, Local 1847 of AFT (1979).
14. Rejected decertification/opt out election (Sept. 1981).
15. Rejected decertification attempt (1978).
16. The recognized bargaining agent, IFT/AFT defeated a decertification attempt by the AAUP. See Summary of Elections, 1983.
17. Chicago State, Governors State, Eastern Illinois, Western Illinois, Northeastern Illinois bargain collectively as one unit.
18. The recognized bargaining agent, AAUP/NEA, defeated a decertification attempt by the AFT in 1979.
19. Rejected decertification attempt (1978).
20. Union voluntarily withdrew its agent status and technically is classified as an agent decertification. However, parties chose to voluntarily continue their collective bargaining relationship.
21. Comprises Massachusetts Community College System and Massachusetts State Colleges; they bargain as two separate units.
22. The recognized bargaining agent, MTA/NEA, defeated a decertification attempt by the AFT. See Summary of Elections, 1983.
23. Voted December 1977 to create single bargaining agent for nine state colleges.
24. University of Massachusetts-Amherst campus rejected decertification attempt (1980).
25. Five community colleges were consolidated to form Arrowhead Community College. The five were: Hibbing CC, Itasca CC, Mesabi CC, Rainy River CC, and Vermillion CC.
26. Formerly known as Central Technical Community College Area.
27. Rejected decertification attempt (Jan. 1979).
28. Union College and Union County Technical Institute merged into Union County College. The AAUP, which had held agent status at Union College, defeated the NEA, the bargaining agent at Union County Technical Institute, for agent status at the newly organized institution. (Vote: AAUP-109, NEA-67).
29. Includes five extension centers.

30. Associated Community College Faculties no longer independent union as of 8/31/78; individual locals voted to affiliate with either NYSUT/AFT or NYEA/NEA.

31. AAUP affiliated with PSC/AFT February 1981.

32. Adjunct faculty at the New York State School of Industrial and Labor Relations, New York City Metropolitan Office, along with the Long Island Campus, bargain collectively as one unit.

33. Economic portions of contract negotiated through 8/31/88. Parties have agreed to reopen non-economic provisions 8/31/86.

34. UUP - United University Professions defeated challenge to agent status by NYEA in December 1978. Unit includes the faculty and non-teaching professionals.

35. Faculty at Kent State University voted to sever ties with NEA, while retaining affiliation with AAUP (1979).

36. Formerly Lakeland Community College.

37. Formerly Oregon College of Education.

38. Affiliated with Antioch University, Silver Springs, Ohio.

39. Includes thirty-seven sites.

40. Previously Rhode Island Junior College.

41. Graduate faculty transferred to Norwich University, 1981.

42. District XII is comprised of Centralia College and Olympia Technical CC, institutions which had previously bargained separately.

43. Washington State CC District V, which previously had been comprised of Edmonds CC and Everett CC, was restructured. Both institutions now bargain separately.

44. Edmonds CC provides educational services for the Washington State Department of Corrections. The bargaining unit does not differentiate among teaching assignments.

45. Also known as District I Technical Institute.

46. University terminated voluntary structure agreement. Union challenged administration's action in state court. Court affirmed University's position.



**FACULTY COLLECTIVE BARGAINING  
AT CANADIAN UNIVERSITIES**

**FACULTY COLLECTIVE BARGAINING AT CANADIAN UNIVERSITIES\***

Institution	Affiliation	Unit Size	Cur. Agent Elected	Initial Contract++	Contract Expiration**
<b>ALBERTA***</b>					
University of Alberta	CAUT <sup>1</sup>	1,897	1982	---	Annual
University of Athabasca	CAUT	90	1982	---	Annual
University of Calgary	CAUT	1,175	1982	---	
University of Lethbridge	CAUT	218	1982	---	Annual
<b>MANITOBA</b>					
Brandon University	CAUT	184	1978	1978	3/31/85
University of Manitoba	CAUT	1,161	1974	1975	3/31/85
Saint Boniface	ACPU/MCEA	38	1983	1977	6/30/83
University of Winnipeg	CAUT	215	1981	1982	3/31/84
<b>NEW BRUNSWICK</b>					
Universite de Moncton	ACPU	255	1976	1977	6/30/84

Institution	Affiliation	Unit Size	Cur. Agent Elected	Initial Contract++	Contract Expiration**
<b>NEW BRUNSWICK (Cont'd.)</b>					
Mount Allison University	CAUT	122	1982	---	
University of New Brunswick	CAUT	600	1979	1980	6/30/85
St. Thomas University	CAUT	56	1976	1977	6/30/84
Saint-Louis Maillet	ACPU	37	1972	1972	8/31/84
<b>NOVA SCOTIA</b>					
Acadia University	CAUT	210	1976	1977	6/30/84
University College of Cape Breton	CAUT	60	1975	1976	6/30/83
Dalhousie University	CAUT	730	1978	1978	6/30/84
Technical University of N.S.	CAUT	105	1980	1980	6/30/83
Saint Mary's University	CAUT	160	1974	1974	8/31/83
o Professional Librarians	CAUT	4	1974	1974	8/31/83
Universite Sainte-Anne	CAUT	24	1982	---	
<b>ONTARIO</b>					
Algoma University College	CAUT	24	1976	1980	6/30/83

Institution	Affiliation	Unit Size	Cur. Agent Elected	Initial Contract++	Contract Expiration**
<u>ONTARIO (Cont'd.)</u>					
Carleton University	CAUT	641	1975	1975	4/30/85
Lakehead University	CAUT	269	1979	1981	6/30/84
o Professional Librarians	CAUT	11	1979	1981	6/30/84
Laurentian University	CAUT	256	1979	1980	6/30/83
University of Ottawa	CAUT	900	1977	1976	4/30/84
Ontario Institute for Studies in Education	CAUT	132	1977	1977	6/30/83
Ryerson Polytechnical Institute	None	560	1964	1980	6/30/84
Trent University	CAUT	182	1980	1981	6/30/83
University of Windsor	CAUT	526	1977	1976	6/30/84
York University	CAUT	971	1977	1976	4/30/83
<u>QUEBEC</u>					
Bishop's University	FAPUQ <sup>2</sup> /CAUT	73	1976	1976	12/31/82
Concordia University	FAPUQ/CAUT	750	1981	---	

Institution	Affiliation	Unit Size	Cur. Agent Elected	Initial Contract**	Contract Expiration**
<u>QUEBEC (Cont'd.)</u>					
Ecole Polytechnique	FAPUQ/ACPU	185	1979	1979	5/30/85
Institut Armand Frappier	FAPUQ/ACPU	32	1979	1980	11/30/82
Universite Laval	FAPUQ/ACPU	1,100	1975	1977	5/31/83
Universite de Montreal	FAPUQ/ACPU	1,000	1975	1975	5/31/84
Universite de Sherbrooke	FAPUQ/ACPU	337	1974	1976	11/30/82
o Engineers	FAPUQ/ACPU	60	1970	1983	11/30/82
Universite du Quebec a Trois-Rivieres	FAPUQ/ACPU	300	1971	1971	11/30/82
Institut National de la Recherche Scientifique	CEQ <sup>3</sup>	77	1973		11/30/82
Universite de Quebec a Chicoutimi	CEQ	192	1979		2/28/86
Universite du Quebec a Montreal	CSN <sup>4</sup>	780	1971	1973	2/28/86
Universite du Quebec a Rimouski	CSN	150	1973		11/30/82
Universite du Quebec dans l'Ouest	CEQ	56	1982		11/30/82
Universite du Quebec a Hull	None	85	1980		11/30/82

Institution	Affiliation	Unit Size	Cur. Agent Elected	Initial Contract++	Contract Expiration**
<b>SASKATCHEWAN</b>					
University of Regina	CAUT	576	1977	1977	6/30/83
St. Thomas More College	CAUT	35	1977		7/1/84
University of Saskatchewan	None	980	1977	1977	6/30/84

**TOTAL FACULTY MEMBERS**

Under provisions of provincial labor legislation at Canadian Universities.

18,581 (excluding CSN and CEQ affiliates)

**SPECIAL PLAN BARGAINING: CANADIAN UNIVERSITIES\*\*\*\***

Institution	Affiliation	Bargaining Unit Size	Provisions
<b><u>BRITISH COLUMBIA</u></b>			
British Columbia	CAUT	2,131	Annual monetary negotiations culminating in interest arbitration (conventional) pursuant to a "Framework Agreement" for bargaining; provides as well for the negotiation of subsidiary agreements on "Conditions of Appointment."
Simon Fraser	CAUT	460	Some terms and conditions negotiable, others may not be unilaterally altered. Annual monetary negotiations culminating in interest arbitration (conventional).
<b><u>ONTARIO</u></b>			
Toronto	CAUT	2,503	Special Plan addresses many terms and conditions, either expressly or by reference to prevailing practice; annual monetary negotiations culminating in mediation.
Guelph	CAUT	600	Comprehensive agreement on terms and conditions of employment; annual salary and benefit negotiations culminating in mediation.
<b><u>PRINCE EDWARD ISLAND</u></b>			
Prince Edward Island	CAUT	110	Annual monetary negotiations culminating in interest arbitration (Final Offer Selection) pursuant to a framework document; other terms and conditions not part of Special Plan Bargaining arrangement.

## FOOTNOTES

\* Information provided by Canadian Association of University Teachers, Ottawa. Most local associations have independent bargaining agent status. CAUT does not hold certificates.

Collective bargaining under provisions of provincial labor legislation.

\*\* Contract expiration dates have been extended in several provinces by wage control legislation.

\*\*\* Statutory recognition in 1982.

\*\*\*\* Faculty association and Board of Governors engage in bargaining outside the scope of labor legislation.

1. Canadian Association of University Teachers/Association Canadienne des professeurs.

2. Federation des associations de professeurs des universites du Quebec.

3. Centrale de l'enseignement du Quebec.

4. Confederation des syndicats nationaux.



**SUMMARY OF ELECTIONS, UNITED STATES - 1983**

SUMMARY OF ELECTIONS - 1983

A. AGENTS ELECTED

INSTITUTION	STATE	UNIT SIZE	VOTE	AGENT ELECTED	2/4 YEAR
Chemeketa Community College •Part-time faculty	OR	214	111 (OEA/NEA) 53 (NA)	OEA/NEA	2
University of California •Librarians	CA CA	401	178 (UFL/AFT) 158 (NA)	UFL/AFT	4
•Nurses	CA	4,400	2,223 (CNA) 865 (NA)	CNA	

B. "NO-AGENT" VOTES

INSTITUTION	STATE	UNIT SIZE	VOTE	AGENT DEFEATED	2/4 YEAR
Oregon State University	OR	1,900	879 (NA) 482 (NEA/AAUP)	NEA/AAUP	4
Umpqua Community College	CA	65	37 (NEA) 26 (OEA/NEA)	OEA/NEA	2
University of California •Professional Scientists & Engineers at Lawrence Livermore National Labs.	CA CA	2,746	1,923 (NA) 609 (SPSE/CSEA)	SPSE/CSEA	4
University of San Francisco •College of Prof. Studies	CA CA	-	112 (NA) 78 (AFT)	AFT	4

C. AGENTS DECERTIFIED

INSTITUTION	STATE	UNIT SIZE	VOTE	AGENT DECERTIFIED	2/4 YEAR
Cooper Union	NY	55	N/A	AFT	4
Ohio Northern University	OH	145	N/A	NEA	4
Seton Hall University	NJ	350	N/A	AFT	4
Stephens College	MO	120 F/PT	N/A	AFT	4
University of New Haven	CT	130	N/A	AFT	4

D. CHALLENGE TO AGENT STATUS

INSTITUTION	STATE	UNIT SIZE	BARGAINING AGENT	CHALLENGING AGENT	VOTE	2/4 YEAR
Butte College	CA	125	CTA/NEA	IND	55 (CTA/NEA) 52 (IND) 2 (NA)	2
East St. Louis Community College	IL	45	IFT/AFT	AAUP	24 (IFT/AFT) 17 (AAUP) 1 (NA)	2
Massachusetts Commu- nity College System	MA	1,600	MTA/NEA	AFT	830 (MTA/NEA) 483 (AFT) 46 (NA)	2

E. FIRST CONTRACTS SIGNED IN 1983

INSTITUTION	STATE	UNIT SIZE	AGENT	2/4 YEAR
California State University •Faculty •Academic Support	CA CA CA	18,000 1,500	CFA/AAUP/NEA UPC/AFT	4

## STATISTICAL ANALYSIS

---

Note: In these tables, the figures refer to total number of recognized bargaining agents and number of contracts with bargaining agents in the United States, according to available information. Multi-campus units have been counted as a single institution with a single bargaining agent unless the individual campuses have separate contracts and bargaining agents in which case they are treated as separate institutions. If there is more than one bargaining unit and more than one recognized bargaining agent in any particular institution (e.g., adjunct faculty, non-teaching professionals), the total number of bargaining agents elected in that institution is the figure used.

Not included in the agent count are bargaining units consisting of non-teaching physicians and nurses. Also excluded from the collective bargaining agreements total are contracts identified by the parties as "informal agreements." Teaching faculty at law schools and medical schools, as well as adjuncts, and teaching assistants are included in all tabulations.

Individual campuses, as distinct from institutions, are not included in either the agent or collective bargaining agreements count and are listed only for identification purposes. The National Center for Education Statistics' definition of a campus was used. Thus Baruch College, a campus of CUNY, never before appeared in the Directory as a separate listing but was grouped as one of the twenty CUNY campuses. This Directory marks the first time that campuses, as well as institutions, have been included. No analysis is offered as to campus groupings---this will appear in future Directories.

TABLE ONE

GROWTH OF UNIONIZATION IN HIGHER EDUCATION  
PUBLIC AND PRIVATE SECTORS, 1974-1983

A. BARGAINING AGENTS

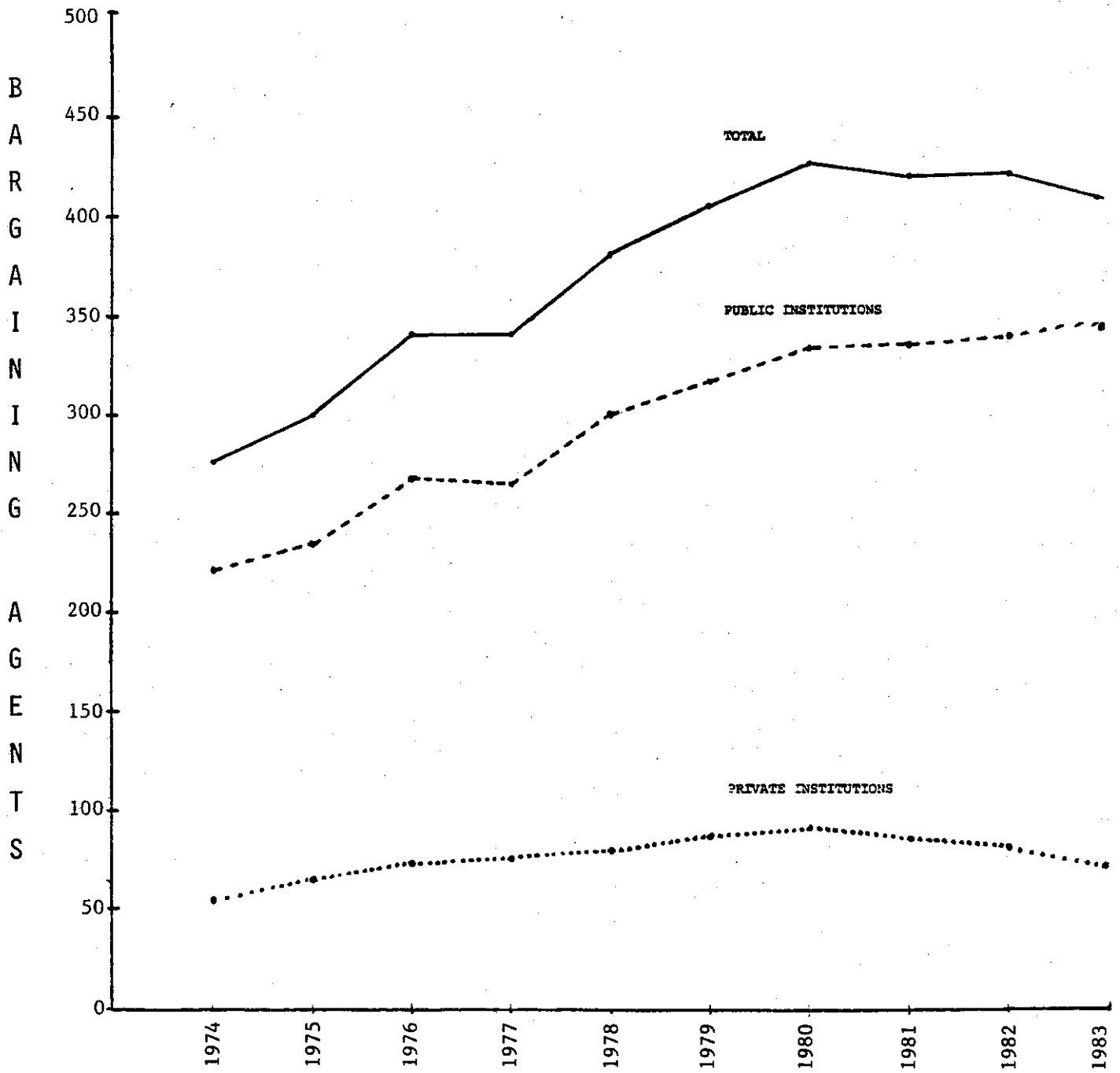


TABLE ONE  
 GROWTH OF UNIONIZATION IN HIGHER EDUCATION  
 PUBLIC AND PRIVATE SECTORS, 1974-1983  
 B. COLLECTIVE BARGAINING AGREEMENTS

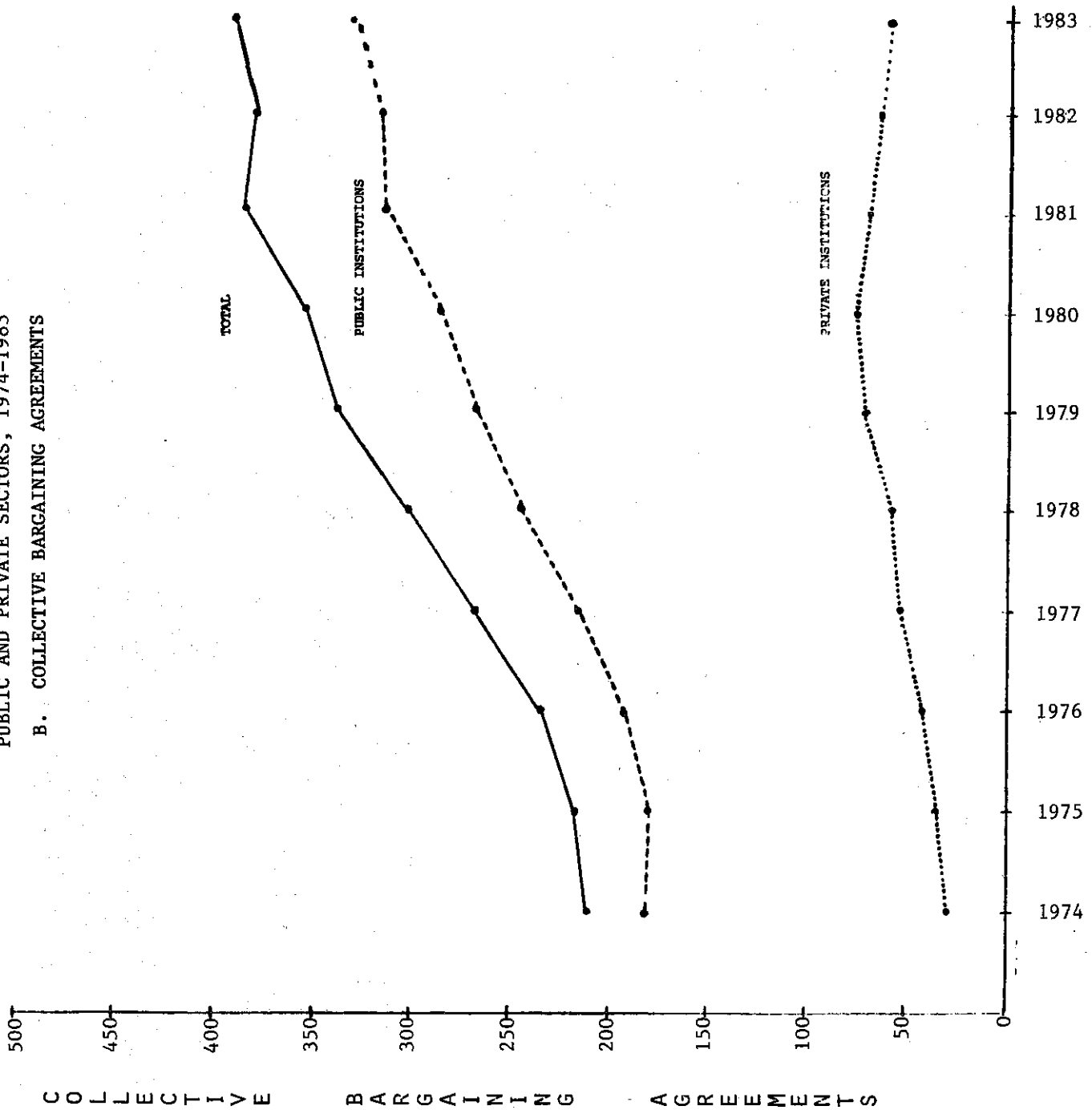


TABLE TWO  
 GROWTH OF UNIONIZATION IN HIGHER EDUCATION  
 IN TWO AND FOUR-YEAR INSTITUTIONS  
 1974-1983

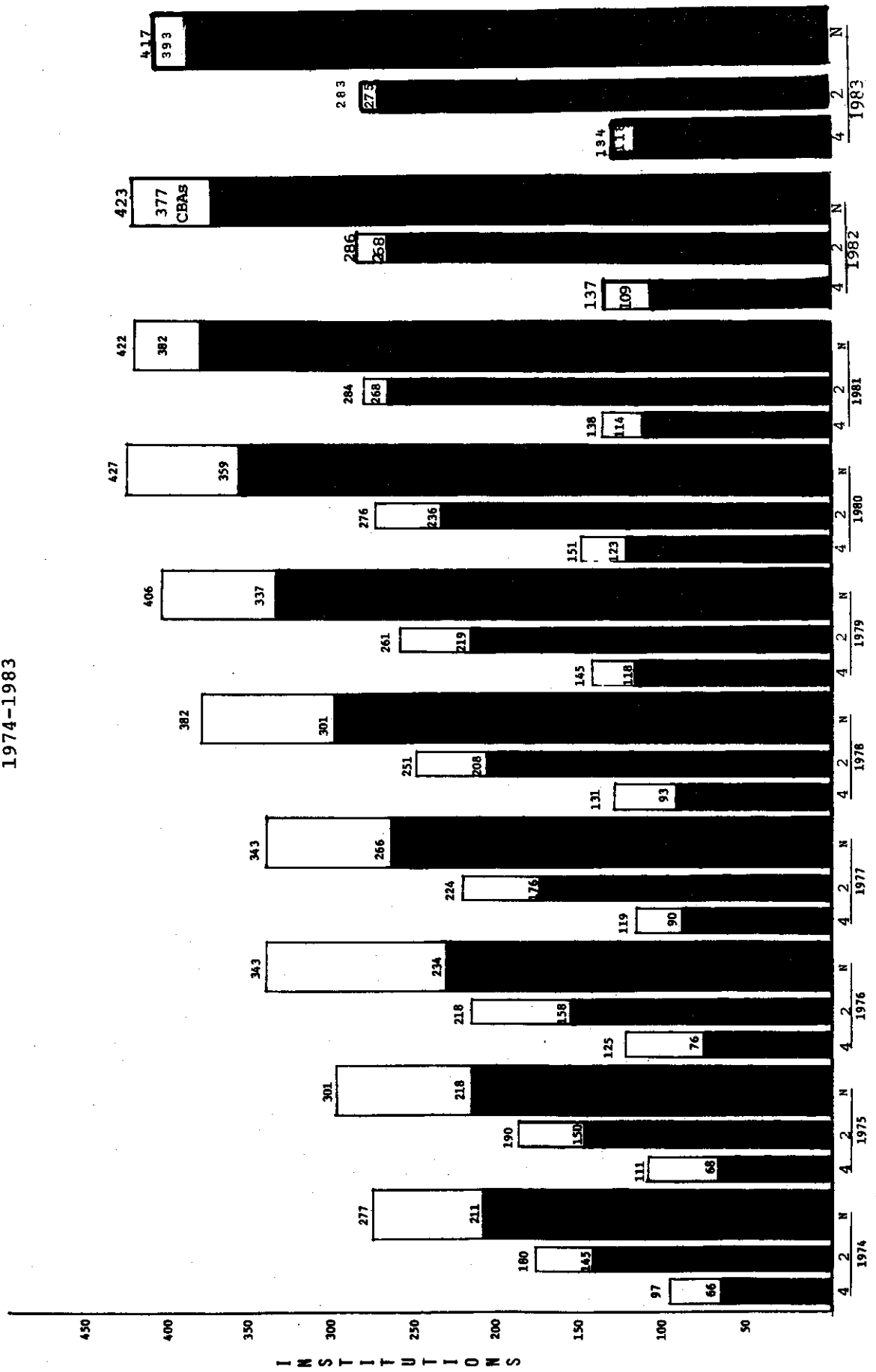


TABLE THREE

RECOGNIZED BARGAINING AGENTS  
1984

	YEAR	AAUP		AFT		NEA		IND		AAUP/ AFT		AAUP/ NEA		AAUP/ IND		AFT/ IND		NEA/ IND		AFSCME	SEIU	TOTAL	
		AAUP	AFT	AAUP	AFT	NEA	AFT	IND	AAUP	AFT	IND	AAUP	AFT	IND	AAUP	AFT	IND	NEA	IND				
PUBLIC INSTITUTIONS	4	21	14	18	6	2	2	0	0	0	3	2	2	2	1	0	1	0	0	1	0	71	
	2	3	77	164	23	0	1	0	0	0	0	1	1	0	1	1	0	1	2	0	1	272	
	TOTAL	24	91	182	29	2	3	0	0	0	3	4	4	2	2	2	1	2	2	2	2	1	N=343
PRIVATE INSTITUTIONS	4	19	17	15	10	0	0	0	1	1	1	0	0	0	0	0	0	0	0	0	0	0	63
	2	1	4	5	1	0	0	0	0	0	0	0	0	0	0	0	0	0	0	0	0	0	11
	TOTAL	20	21	20	11	0	0	0	1	1	1	0	0	0	0	0	0	0	0	0	0	0	N=74
SUMMARY OF RECOGNIZED AGENTS	4	40	31	33	16	2	2	1	1	4	2	2	2	2	1	0	1	2	2	1	0	134	
	2	4	81	169	24	0	1	0	0	0	2	1	0	0	1	1	0	2	0	1	1	283	
	TOTAL	44	112	202	40	2	3	1	1	4	4	4	4	2	2	2	1	2	2	2	2	1	N=417

**TABLE FOUR**  
**COLLECTIVE BARGAINING AGREEMENTS**  
**1984**

	YEAR	AAUP	AFT	NEA	IND	AAUP/ AFT	AAUP/ NEA	AAUP/ IND	AFT/ IND	NEA/ IND	AFGE	AFSCME	SEIU	TOTAL
<b>PUBLIC INSTITUTIONS</b>	4	20	13	17	3	2	2	0	2	2	2	1	0	64
	2	3	76	158	22	0	1	0	0	2	0	1	1	264
	<b>TOTAL</b>	<b>23</b>	<b>89</b>	<b>175</b>	<b>25</b>	<b>2</b>	<b>3</b>	<b>0</b>	<b>2</b>	<b>4</b>	<b>2</b>	<b>2</b>	<b>1</b>	<b>N=328</b>
<b>PRIVATE INSTITUTIONS</b>	4	19	17	11	5	0	0	1	1	0	0	0	0	54
	2	1	4	5	1	0	0	0	0	0	0	0	0	11
	<b>TOTAL</b>	<b>20</b>	<b>21</b>	<b>16</b>	<b>6</b>	<b>0</b>	<b>0</b>	<b>1</b>	<b>1</b>	<b>0</b>	<b>0</b>	<b>0</b>	<b>0</b>	<b>N=65</b>
<b>SUMMARY OF BARGAINING AGREEMENTS</b>	4	39	30	28	8	2	2	1	3	2	2	1	0	118
	2	4	80	163	23	0	1	0	0	2	0	1	1	275
	<b>TOTAL</b>	<b>43</b>	<b>110</b>	<b>191</b>	<b>31</b>	<b>2</b>	<b>3</b>	<b>1</b>	<b>3</b>	<b>4</b>	<b>2</b>	<b>2</b>	<b>1</b>	<b>N=393</b>



TABLE FIVE

ANALYSIS OF BARGAINING AGENTS & COLLECTIVE BARGAINING AGREEMENTS

YEAR	AAUP	AFT	NEA	IND	AAUP/ AFT	AAUP/ NEA	AAUP/ IND	AFT/ IND	NEA/ IND	AFGE	AFSCME	SEIU	TOTAL
4	40	31	33	16	2	2	1	4	2	2	1	0	134
2	4	81	169	24	0	1	0	0	2	0	1	1	283
TOTAL	44	112	202	40	2	3	1	4	4	2	2	1	N=417

83

4	39	30	28	8	2	2	1	3	2	2	1	0	118
2	4	80	163	23	0	1	0	0	1	0	1	1	275
TOTAL	43	110	191	31	2	3	1	3	3	2	2	1	N=393

BARGAINING UNITS  
WITHOUT CONTRACTS

N=24

TABLE SIX  
GEOGRAPHIC DISTRIBUTION OF BARGAINING AGENTS AND CONTRACTS

State	4-Year Agents/Contracts		2-Year Agents/Contracts		Total Agents/Contracts	
Alaska	0	0	1	1	1	1
Arizona	0	0	1	1	1	1
California	7	5	57	54	64	59
Colorado	3	2	1	0	4	2
Connecticut	8	8	3	3	11	11
Delaware	2	2	0	0	2	2
District of Columbia	3	2	0	0	3	2
Florida	3	2	7	7	10	9
Hawaii	1	1	0	0	1	1
Illinois	2	1	21	21	23	22
Iowa	2	2	13	13	15	15
Kansas	1	1	14	14	15	15
Maine	1	1	1	1	2	2
Maryland	1	0	2	2	3	2
Massachusetts	9	9	4	4	13	13
Michigan	15	13	28	27	43	40
Minnesota	2	2	1	1	3	3
Missouri	1	1	2	2	3	3
Montana	4	4	2	2	6	6
Nebraska	3	2	5	5	8	7
New Hampshire	2	2	0	0	2	2
New Jersey	9	8	16	16	25	24
New York	22	20	35	35	57	55
Ohio	5	5	4	4	9	9
Oregon	5	5	12	11	17	16
Pennsylvania	10	8	14	13	24	21
Rhode Island	6	5	1	1	7	6
South Dakota	2	2	0	0	2	2
Vermont	2	2	0	0	2	2
Virginia	1	1	0	0	1	1
Washington	0	0	23	22	23	22
Wisconsin	1	1	15	15	16	16
Guam	1	1	0	0	1	1
TOTAL	134	118	283	275	417	393

TABLE SEVEN<sup>1</sup>

FACULTY REPRESENTED BY CERTIFIED BARGAINING AGENTS

YEAR	AAUP	AFT	NEA	IND	AAUP/ AFT	AAUP/ NEA	AAUP/ IND	AFT/ IND	NEA/ IND	AFGE	AFSCME	SEIU	TOTAL
<b>PUBLIC</b>													
4	18,326	23,581	15,476	1,356	19,521	20,700	0	3,256	2,025	126	0	0	104,367
2	887	30,169	29,545	6,129	0	117	0	0	1,676	0	80	396	68,996
<b>TOTAL</b>	19,213	53,750	45,021	7,485	19,521	20,817	0	3,256	3,698	126	80	396	N=173,363
<b>OR PRIVATE</b>													
4	4,022	2,331	2,272	409	0	0	27	26	0	0	0	0	9,087
2	180	137	132	65	0	0	0	0	0	0	0	0	514
<b>TOTAL</b>	4,202	2,468	2,404	474	0	0	27	26	0	0	0	0	N=9,601
<b>SUMMARY OF UNIT SIZE</b>													
4	22,348	25,912	17,748	1,765	19,521	20,700	27	3,282	2,025	126	0	0	113,454
2	1,067	30,306	29,677	6,194	0	117	0	0	1,673	0	80	396	69,510
<b>TOTAL</b>	23,415	56,218	47,425	7,959	19,521	20,817	27	3,282	3,698	126	80	396	N=182,964

<sup>1</sup> Represents both full-time and part-time faculty members included in certified bargaining units. No distinction is made with respect to union membership.

**TABLE EIGHT**  
**STATUS OF PUBLIC SECTOR COLLECTIVE BARGAINING LEGISLATION<sup>1</sup>**

STATE	Date of Legislation or Amendment
Alaska	1972
Arizona	Governing Boards <sup>2</sup>
California	1975 (2 yr.); 1978 (4 yr.)
Connecticut	1975
Delaware	1970
District of Columbia	Governing Boards
Florida	1974
Hawaii	1970 (amend. 1975)
Illinois	1983
Iowa	1974
Kansas	1970 (2 yr.) (amend. 1974)
Maine	1974 (2 yr. voc. tech.) (amend. 1975) 1975 (all other)
Maryland	Governing Boards
Massachusetts	1974
Michigan	1973 (amend. 1976)
Minnesota	1971 (amend. 1976, 1980)
Montana	1973 (amend. 1975)
Nebraska	1972
Nevada	Governing Boards
New Hampshire	1975
New Jersey	1974 (amend.)
New York	1967 (amend. 1975)
Ohio	1983
Oregon	1963 (2 yr.) (amend. 1975)
Pennsylvania	1970
Rhode Island	1958 (amend. 1973)
South Dakota	1969 (amend. 1974)
Vermont	1972 (amend. 1975)
Washington	1973 (2 yr.)
Wisconsin	1966 (2 yr.) (amend. 1974)

<sup>1</sup> Public institutions only. Authority to engage in collective bargaining has existed since 1970 in private institutions under the National Labor Relations Act. See Introduction for discussion of pending legislation.

<sup>2</sup> No legislation. Governing Boards enacted policy enabling collective bargaining at institution. Not general for state institutions of higher education as a whole.

TABLE NINE  
SUMMARY OF DECERTIFICATIONS<sup>1</sup>

Year	Institution	State	2/4	Unit Size	Agent	Year Agent Elected
1976	*New England College	NH	4		AFT	
1977	*Jamestown College	ND	4		NEA	
1980	Delaware Technical & CC	DE	2	230	NEA	1974
1980(Y) <sup>2</sup>	*Catholic Univ. of America Law School	DC	Grad.	22	Ind.	1977
1981(Y)(W) <sup>3</sup>	*Mount Vernon College	DC	4	25	AAUP	1977
1981(Y)	*Salem College	WV	4	64	NEA	1979
1981(W)	Southwestern Michigan Coll.	MI	2	35	NEA	1969
1981(Y)	*University of Albuquerque	NM	4		NEA	1982
1982(Y)(W)	*Ashland College	OH	4	82	AAUP	1972
1982(Y)(W)	*Curry College	MA	4	95	AAUP	1979
1982(Y)(W)	*Daemen College	NY	4	80	AAUP	1979
1982(Y)(W)	*Drury College	MO	4	60	AAUP	1979
1982(Y)	*College of Osteopathic Medicine & Surgery	IA	4	65	AFT	1975
1982(Y)	*Stevens Institute of Tech.	NJ	4	109	AAUP	1976
1982(Y)	*Wagner College	NY	4	105	AFT	1979
1983(Y)	*Cooper Union	NY	4	55	AFT	1976
1983(Y)	*Ohio Northern University	OH	4	145	NEA	1979
1983(Y)	*Seton Hall University	NJ	4	350	AFT	1982
1983(Y)	*Stephens College	MO	4	120	AFT	1979
1983(Y)	*University of New Haven	CT	4	130	AFT	1979

<sup>1</sup> For purposes of this listing, decertifications are defined as those instances in which a bargaining agent election is lost by the certified agent to "No-Agent" or when the NLRB or appropriate state agency determines that the certified agent is no longer "representative." Those instances in which the certified agent was challenged by a competing organization and subsequently lost its certificate are not considered technical decertifications and are listed under "Change in Agent Status."

<sup>2</sup> Y - Results of Yeshiva litigation.

<sup>3</sup> W - Union voluntarily withdrew its certification.

TABLE TEN

ROSTER OF INSTITUTIONS AFFECTED BY THE YESHIVA DECISION

Institution	State	Unit Size	Current or Pending Bargaining Agent	Year Current Agent Electe
*Adrian College	MI	56	NEA	'75
*American International College	MA	-	AAUP	-
*American Univ. English Lang. Institute	DC	37	ELIFA	'82
*Ashland College	OH	82	AAUP	'72
*Boston University	MA	860	AAUP	'75
*Bradford College	MA	29	IBT	'82
*Catholic Univ. of America Law School	DC	22	IND	'77
*College of Osteopathic Medicine	IA	65	AFT	'75
*Cooper Union	NY	55	AFT	'76
*Curry College	MA	95	AAUP	'79
*Daemen College	NY	80	AAUP	'79
*Drury College	MO	60	AAUP	'79
*Duquesne Univ. Law School	PA	26	Faculty Assn.	
*Florida Memorial College	FL	40	UFF/AFT	'79
*Kendall School of Design	MI	50	NEA	'74
*Ithaca College	NY	-	NYSUT/AFT	'78
*Lewis University	IL	97	IND	'75
*Livingstone College	NC	77	AFT	-
*Long Island Univ.-Brooklyn	NY	250	AFT	'76
*Long Island Univ.-C.W. Post	NY	350	AFT	'76
*Long Island Univ.-Coll. of Pharmacy	NY	25	AAUP	'78
*Long Island Univ.-Southampton	NY	72	AFT	'76
*Loretto Heights College	CO	100	NEA	'72
*Milton College	WI	35	AFT	'79
*Montefiore Hosp./Medical Center	NY	-	NYS FED.PHY-DENTISTS	-
*Mount Vernon College	DC	25	AAUP	'77
*Nasson College	ME	30	AFT	'77
*Ohio Northern University	OH	145	NEA	'79
*Parsons School of Design	NY	-	AFT	-
*Polytechnic Institute of NY	NY	220	AAUP	'71
*Pratt Institute of NY	NY	470	AFT	'71
*Rio Grande	OH	53	IND	'76
*Saint Joseph College	ME	27	NEA	-
*Saint Theresa College	MN	-	AAUP	-
*Salem College	WV	64	NEA	'79
*Seattle University	WA	-	AAUP	-
*Seton Hall University	NJ	-	AFT	'82
*Simon's Rock Early College	MA	27	SRFBC/AAUP	'80
*Stephens College	MO	120	AFT	'79
*Stephens Inst./Acad. of Art Coll.	CA	-	IND	-

(continued)

Institution	State	Unit Size	Current or Pending Bargaining Agent	Year Current Agent Elected
-------------	-------	-----------	-------------------------------------	----------------------------

ROSTER OF INSTITUTIONS (Cont'd.)

*Stevens Institute of Technology	NJ	109	AAUP	'76
*Thiel College	PA	63	AAUP	
University of Alaska	AK	-	NEA	'82
*University of Albuquerque	NM	-	NEA	'82
*University of New Haven	CT	130	AFT	'79
*Villanova University	PA	-	AAUP	-
*Wagner College	NY	105	AFT	'79
Witchita State University	KS	-	KEA	-
*Wilberforce University	OH	49	AAUP	'79
*Yeshiva University	NY	200	IND	'76

TABLE ELEVEN  
COLLEGE CLOSINGS<sup>1</sup>

Institution	State	Agent	Unit Size	2/4 Year	Closing Date
*Central YMCA Community College	IL	AFT	80	2	1983
*Colorado Women's College	CO	AAUP	42	4	1982
*Detroit Institute of Technology	MI	NEA	34	4	1981
*Nasson College	ME	AFT	30	4	1983
*Shaw College at Detroit <sup>2</sup>	MI	NEA	37	4	1983

<sup>1</sup>Institution previously cited in the Directory as having negotiated collective bargaining agreements.

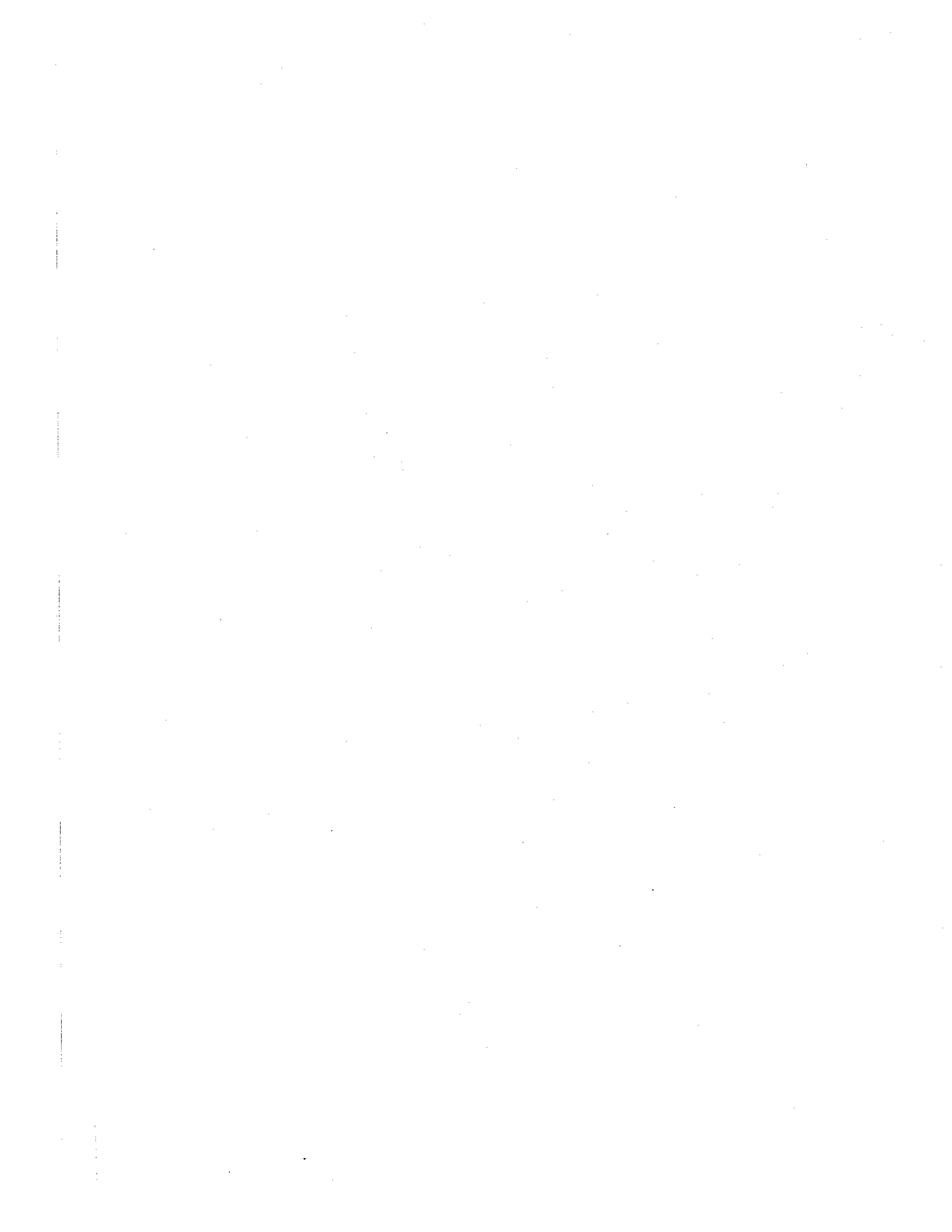
<sup>2</sup>U. S. Bankruptcy Court judge orders permanent closing of institution. (March, 1984)



TABLE TWELVE

BARGAINING AGENTS CITED IN THIS DIRECTORY

AAUP	American Association of University Professors
ACCF	Associated Community College Faculties
ACPU	Association Canadien des Professeur's d'Universite
AFGE	American Federation of Government Employees
AFSCME	American Federation of State, County and Municipal Employees
AFT	American Federation of Teachers
APSCUF	Association of Pennsylvania State College and University Faculties
CAUT	Canadian Association of University Teachers
CEQ	Centrale de l'Enseignement du Quebec
CFA	California Faculty Association
CNA	California Nurses Association
CSEA	California State Employees Association
CSN	Confederation des Syndicats Nationaux
CTA	California Teachers Association
ELIFA	English Language Institute Faculty Association
FAPUQ	Federations des Associations de Professeurs des Universities du Quebec
FUSA	Faculty United Service Association
GFT	Guam Federation of Teachers
IFT	Illinois Federation of Teachers
IND	Independent
MCCC	Massachusetts Community College Council
MSP	Massachusetts Society of Professors
MTA	Massachusetts Teachers Association
NEA	National Education Association
NYEA	New York Educator's Association
NYSUT	New York State United Teachers
OPEIU	Office of Professional Employees International Union
OEA	Oregon Education Association
PaFT	Pennsylvania Federation of Teachers
PCFA	Post College Faculty Association
PSC	Professional Staff Congress
SCEA	State Colleges Education Association (Nebraska)
SEIU	Service Employees' International Union
SPSE	Society of Professional Scientists and Engineers
SRFBC	Simon's Rock Faculty Bargaining Council
TAA	Teaching Assistants Association
UAPD	Union of American Physicians and Dentists
UCCFF	United Community College Faculty of Florida
UEA	University Education Association
UFF	United Faculty of Florida
UFL	University Federation of Librarians
UHPA	United Hawaii Professional Assembly
UPC	United Professors of California
UPI	United Professionals of Illinois
UUP	United University Professions
WEA	Wisconsin Education Association



**"NO-AGENT" VOTES**  
**1971 - 1983**



"NO-AGENT" VOTES  
1971 - 1983

State	Institution	Agent Defeated	Year	2/4
ALASKA	University of Alaska	NEA	1982	4
CALIFORNIA	*California Institute of the Arts	AFT	1975-	4
	Coachella Valley Community College	NEA	1978	2
	College of the Desert	NEA	1979	2
	Imperial Valley College	NEA	1980	2
	North Orange County Community College**	NEA	1978	2
	Pasadena City College**	NEA	1977	2
	Univ. of California-Berkeley	AAUP	1980	4
	-UCLA	Ind.	1981	4
	-Professional Scientist & Engineers of the Lawrence Livermore National Labs.	SPSE/CSEA	1983	4
	Univ. of San Francisco-College of Professional Studies	AFT	1983	4
COLORADO	University of Colorado** . Boulder	AAUP/AFT	1975- 1980	4 4
CONNECTICUT	*Wesleyan University	AAUP	1979	4
DISTRICT OF COLUMBIA	*Catholic University of America		1979	4

State	Institution	Agent Defeated	Year	2/4	
<b>"NO-AGENT" VOTES (Cont'd.)</b>					
FLORIDA	Central Florida Community College	NEA	1977	2	
	Florida Junior College	AFT	1975	2	
	*Jacksonville University	AAUP	1975-	4	
	Miami Dade Junior College	AFT	1975	2	
	Okaloosa-Walton Junior College	NEA	1975	2	
	Pensacola Junior College (Full & Part-time)	UFF/AFT	1979	2	
	Polk Community College	AFT	1975	2	
	Santa Fe Community College	NEA	1976	2	
	St. Petersburg Junior College	NEA	1977	2	
	Univ. of Florida-Institute of Food and Agric. Science	Ind.	1976	4	
	Univ. of Florida-Gainesville**		1980	4	
	*Univ. of Miami-Coral Gables	AAUP	1974	4	
	ILLINOIS	*College of St. Francis	AFT	1975-	4
		William Rainey Harper College**	NEA,AFT	1976	2
INDIANA	*Butler University	NEA	1977	4	
	*University of Evansville	NEA	1979	4	
MAINE	*Ricker College	AFT	1975-	4	
MASSACHUSETTS	*Anna Maria College	AAUP	1978	4	
	*Bradford College	IBT	1982	4	
	*Curry College**	Ind.	1975	4	
	*Dean Junior College	AFT	1975-	2	
	Holyoke Community College** (subsequently affiliated with NEA under statewide system)	NEA	1971	2	
	*Lasell Junior College	AFT	1976	2	

State	Institution	Agent Defeated	Year	2/4
<b>"NO-AGENT" VOTES (Cont'd.)</b>				
<b>MASSACHUSETTS</b>				
	(Cont'd.)			
	Massachusetts Maritime Academy	AFT, NEA	1975	4
	*Merrimack College	NEA	1976	4
	*New England Conservatory of Music	AAUP	1975	4
	*Northeastern University	AAUP, NEA	1975	4
<b>MICHIGAN</b>				
	*Albion College	AAUP, NEA	1975-	4
	American Institute of Technology	AAUP	1980	4
	Grand Valley State Colleges	NEA	1974	4
		NEA	1977	
		NEA	1980	
		NEA	1982	
	*Lawrence Institute of Technology	AAUP	1975-	4
	Michigan State University	AAUP, NEA	1972	4
		AAUP, NEA	1978	
		AAUP, NEA	1982	
	Northern Michigan University**	NEA	1975	4
	*University of Detroit**	AAUP	1975-	4
		NEA	1975-	
<b>MINNESOTA</b>				
	*Hamline University	AAUP	1975	4
	University of Minnesota			
	- Faculty**	AAUP	1978	4
	- Law School(Duluth & Twin Cities Campus)		1980	
	- Health Science(Duluth & Cities Campus)		1980	
	- Crookston Campus-Faculty		1980	
	- Minneapolis-St. Paul	NEA, AAUP	1981	

State	Institution	Agent Defeated	Year	2/4
<b>"NO-AGENT" VOTES (Cont'd.)</b>				
MISSOURI	*Stephens College**	AFT, AAUP	1978	4
MONTANA	Montana State University	AAUP	1978	4
	University of Montana**	AAUP, AFT	1975	4
NEBRASKA	University of Nebraska, Lincoln	AAUP	1977	4
	Univ. of Nebraska College of Dentistry	Ind.	1975	4
NEW HAMPSHIRE	*Nathaniel Hawthorne College	AFT	1975	4
	University System of New Hampshire			4
	- Durham Campus	AAUP, NEA	1977	
	- Plymouth Campus	AAUP, NEA	1977	
NEW JERSEY	*Centenary College for Women	AAUP	1977	4
	Somerset County College-Adjunct Unit	AFT	1982	2
NEW YORK	Corning Community College	AFT	1976	2
	*Fordham University (2 elections)	AAUP	1975-	4
	*Ithaca College**	AAUP, AFT	1975-	4
	*Manhattan College	AAUP	1971	4
	*New York University	AAUP, AFT	1975-	4
		AFT	1975-	
	*Pace University	AAUP	1978	4
	*Rensselaer Polytechnic Institute	AAUP	1975	4
	*Rosary Hill College	NEA	1975-	4
	*Saint Joseph's College	AFT	1976	4
	*Syracuse University	AAUP	1975-	4



State	Institution	Agent Defeated	Year	2/4
<b>"NO-AGENT" VOTES (Cont'd.)</b>				
NEW YORK (Cont'd.)	*Villa Maria College	AFT	1975-	2
NORTH CAROLINA	*Barber-Scotia College	NEA	1979	4
OHIO	*Antioch College	AAUP, AFT	1975-	4
	*Baldwin-Wallace College	AAUP	1975-	4
	Bowling Green State University	Ind.	1979	4
	*Oberlin College	Ind.	1974	4
	Ohio University	AAUP, NEA	1976	4
	University of Toledo	AAUP, AFT	1975-	4
OREGON	Eastern Oregon State College	Ind.	1977	4
	Oregon Institute of Technology	AAUP, AFT	1975	4
	Oregon State University	NEA, AAUP	1977	4
	Treasure Valley Community College	NEA	1983	2
	Umpqua Community College	NEA	1977	2
	University of Oregon	AAUP, AFT	1979	2
			1977	4
PENNSYLVANIA	Butler County Community College	NEA, Ind.	1976	2
	*King's College	AFT, NEA	1975-	4
	Pennsylvania State University	AAUP, NEA	1977	4
	*Philadelphia College of Art	AFT	1975-	4
	*Point Park College	AAUP	1974	4
	*Seton Hill College	NEA	1975-	4
	University of Pittsburgh	AFT	1977	4
	Univ. of Pittsburgh Health Professional Schools	AAUP, NEA	1975	4
	Univ. of Pittsburgh Law School	Ind.	1975	4

State	Institution	Agent Defeated	Year	2/4
<b>"NO-AGENT" VOTES (Cont'd.)</b>				
PENNSYLVANIA (Cont'd.)	Univ. of Pittsburgh-Provost Unit	AAUP, AFT, NEA	1976	4
	*Villanova University	AAUP, AFT	1975-	4
	*Waynesburg College	NEA	1976	4
	*Wilson College	PSEA/NEA	1977	4
RHODE ISLAND	*Rhode Island School of Design**	AFT		4
TENNESSEE	*Tusculum College	AFT	1972	4
VERMONT	University of Vermont	AFT, AAUP, NEA	1976	4
VIRGINIA	*Randolph-Macon College	AAUP	1973	4
WASHINGTON	*Seattle University	AAUP	1975-	4
WISCONSIN	*Northland College**	AFT	1972	4

\*Denotes private institution.

For purposes of this Directory, "No-Agent" Votes are defined as elections in which faculty chose not to be represented by a certified collective bargaining agent. At those institutions in which faculty subsequently elected to be represented, the symbol \*\* is used. Information on "No-Agent" Votes conducted prior to 1975 is not readily available, thus for those institutions the year 1975, followed by a dash, -, is used.

INDEX OF UNITED STATES  
AND  
CANADIAN INSTITUTIONS CITED IN  
1983 DIRECTORY

INDEX

Institution	Page No.
Acadia University	69
Adelphi University	39
Adirondack Community College	40
Adrian College	27, 88
Aimes Community College	11
Albany State University-SUNY	47
Albion College	95
Alemanly Center-San Francisco C.C.	8
Alfred State College-SUNY	46
Algoma University College	69
Allegheny Campus	52
Alpena Community College	27
Ambler Campus-Temple University	55
American Institute of Technology	95
American International College	88
American River College	5
American River College Center	6
American University	14
American Univ. English Language Institute	88
Amherst Campus - Univ. of Mass.	27
Anchorage Community College	1
Ankeny Campus-Des Moines Area C.C.	20
Ann Arbor-Univ. of Michigan	31
Anna Maria College	94
Anoka-Ramsey Community College	32
Antioch College-Ohio	97
Antioch College-Pennsylvania	52
Antioch College School of Law-Wash. D.C.	14
Arapahoe Community College	11
Area Vocational Tech. & Adult Educ. Distr. I	60-61
Arrowhead Community College	32
Ashland Campus-Wisconsin	63
Ashland College-Ohio	87, 88
Ashtabula Regional Campus-Kent State, Ohio	50
Asnuntuck Community College	12
Atlantic Community College	36
Auburn Hills Campus-Oakland C.C.	30
Austin Community College	32

INDEX (Cont'd.)

Institution	Page No.
Baker Junior College of Business	27
Bakersfield-Calif. State College	2
Bakersfield College	5
Baldwin-Wallace College	97
Barber-Scotia College	97
Bard College	40
Barstow Community College	1
Baruch College-CUNY	40
Bay de Noc Community College	27
Beatrice Campus-Southeast Tech. C.C.	35
Beaver Dam Campus-Moraine Park Tech. Instit.	62
Becker Junior College	25
Belleville Area College	17
Bellevue Community College	58
Bemidji State University	32
Bergen Community College	36
Berkshire Community College	26
Big Bend Community College	58
Binghamton State University-SUNY	47
Bishop's University	70
Black Hills State College	56
Blackhawk Voc. Tech. Institute	61
Bloomfield College	36
Bloomsburg State College	54
Blue Hills Community College	26
Blue Mountain Community College	51
Bd. of Regents of Higher Educ.-Mass. C.C. System	26
Boone Campus-Des Moines Area C.C.	20
Borough of Manhattan C.C.-CUNY	40
Boston Campus-Univ. of Mass.	27
Boston University	25, 88
Bowling Green State University	97
Boyce Campus-C.C. of Allegheny County	52
Bradford College	88, 94
Brandon University	68
Brainerd Community College	32
Brevard Community College	15
Bridgewater State College	26
Bristol Campus-Roger Williams College	56
Bristol Community College	26
Brockport State College-SUNY	47
Brookdale Community College	36
Brooklyn College-CUNY	40
Brooklyn Polytechnic of N.Y.	45
Brooklyn-Pratt Institute of N.Y.	46
Broome Community College	40
Broward Community College	15

INDEX (Cont'd.)

Institution	Page No.
Bryant College	55
Bucks County Community College	52
Bronx Community College-CUNY	40
Buffalo(Health & Sci. Ctr.)-SUNY	48
Buffalo State University-SUNY	47
Bunker Hill Community College	26
Burlington County College	36
Butler County Community College	97
Butler County Community Junior College	22
Butler University	94
Butte College	2
California Institute of the Arts	93
California State College	54
California State University	2
Camden Campus-Rutgers State Univ.	38
Camden County College	36
Canada College	9
Canton Agric. & Tech. College-SUNY	46
Cape Cod Community College	26
Capital District E.O.C.-Hudson Valley C.C.	43
Carl Sandburg College	17
Carleton University	70
Cascade Campus-Portland Oregon C.C.	51
Castleton State College	57
Catholic University of America	93
Catholic Univ. of America Law School	87, 88
Cattaraugus Center-Jamestown C.C.	43
Cayuga County Community College	40
Centenary College for Women	96
Center Campus-Macomb County C.C.	29
Central Campus-Broward C.C.	15
Central Campus-Seattle C.C. Distr. VI	59
Central Community College	34
Central Connecticut State College	13
Central Florida Community College	94
Central Maine Voc. Tech. Institute	24
Central Michigan University	28
Central Oregon Community College	51
Central YMCA C.C.	90
Centralia College	58
Cerro Coso College	5

INDEX (Cont'd.)

Institution	Page No.
Chabot College	3
Chadron State College	35
Chaffee Community College	3
Chemeketa Community College	51
Cheyney State College	54
Chicago State University	18
Chicago Urban Skills Institution	18
Chico-CSU	2
Chipola Junior College	15
Chippewa Falls Adult & Voc. School	61
Citrus College	3
City Campus-Erie C.C.	42
City College-CUNY	40
City Colleges of Chicago	18
City College of San Francisco	8
City University of New York	40
City-wide College	18
Clackamas Community College	51
Clairemont Mesa Center-San Diego C.C.	8
Claremont Colleges	3
Claremont McKenna College	3
Claremont University Graduate School	3
Clarion State College	54
Clark College	58
Clatsop Community College	51
Clermont General & Technical College	50
Clinton Community College-Iowa	20
Clinton Community College-N.Y.	41
Cloud County Community Junior College	22
Coachella Valley Community College	93
Coast Community College District	3
Coastline Community College	3
Cobleskill Agric. & Tech. College-SUNY	46
Cocoa Campus-Brevard C.C.	15
Coffeyville Community Junior College	22
Colby Community College	22
College of Agric. & Life Sci. at Cornell-SUNY	47
College of Alameda	7
College of Applied Science	50
College of Ceramics at Alfred Univ.-SUNY	47
College of Environmental Sci. & Forestry at Syracuse-SUNY	47
College of Human Ecology at Cornell-SUNY	47
College of Lake County	18
College of Marin	6

INDEX (Cont'd.)

Institution	Page No.
College of Optometry at N.Y.C.-SUNY	48
College of Osteopathic Medicine	87,88
College of San Mateo	9
College of Staten Island-CUNY	40
College of St. Francis	94
College of Technology at Utica/Rome-SUNY	47
College of the Desert	93
College of the Redwoods	3
College of the Sequoias	3
College of Veterinary Medicine at Cornell	47
Colorado Community College System	11
Colorado Mountain College	11
Colorado Northwestern Community College	11
Colorado Women's College	90
Columbia Basin Community College	58
Columbia College	11
Columbia Greene Community College	41
Columbus-Region 1-Central C.C.	34
Community Campus-Pima C.C.	1
Community College Centers-San Francisco C.C.	8
Community College District XII-Wash. D.C.	58
Community College of Allegheny County	52
Community College of Baltimore	24
Community College of Beaver County	53
Community College of Denver	11
Community College of Philadelphia	53
Community College of Rhode Island	55
Community College of the Finger Lakes	41
Community College of Vermont	57
Community College Skills Center-San Francisco C.C.	8
Compton Community College	4
Concordia University	70
Connecticut Community College System	12
Connecticut State Technical Colleges	13
Connecticut State University System	13
Contra Costa College	4
Contra Costa Community College District	4
Cooper Union	87,88
Cornell University-ILR	41,47
Corning Community College	96
Cortland State College-SUNY	47
Cosummes River College	5
Cottey College	33
County College of Morris	37
Cowley County Community College	22



INDEX (Cont'd.)

Institution	Page No.
Crookston Campus-Univ. of Minn.	95
Cumberland County College	37
Curry College	25,87,88,94
Cuyahoga Community College District	49
Cuyamaca College	4
Cypress College	6
Daemen College	87,88
Dakota State College	56
Dale Mabry Campus-Hillsborough C.C.	16
Dalhousie University	69
Dawson Community College	33
Dean Junior College	94
DeAnza Collège	4
Dearborn Campus-Univ. of Mich.	31
Dearborn Heights Campus-Henry Ford C.C.	28
Delaware County C.C.	53
Delaware State College	14
Delaware Technical & Community College	87
Delhi Agric. & Tech. College-SUNY	46
Denver-Auraria C.C.	11
Des Moines Area Community College	20
Detroit College of Business	28
Detroit Institute of Technology	90
Diablo Valley College	4
District I Tech. Institute	61
Dodge City Community Junior College	22
Dominguez Hills-Calif. State Univ.	2
Dowling College	42
Downriver Region-Wayne County C.C.	31
Downstate Medical Ctr.-Brooklyn-SUNY	48
Downtown Campus-Pima C.C.	1
Downtown Community College Center-San Francisco C.C.	8
Drury College	87
Duluth Campus-Univ. of Minn.	32
Duquesne University Law School	88
Durham Campus-Univ. System of New Hampshire	96
Dutchess Community College	42
Dyke College	49
D'Youville College	42

INDEX (Cont'd.)

Institution	Page No.
East Campus-Pima C.C.	1
East Liverpool Regional Campus-Kent State	50
East Los Angeles College	5
East St. Louis Community College	18
East San Diego Campus-San Diego C.C.	8
East Stroudsburg State College	54
Eastern Campus-Cuyahoga C.C. District	49
Eastern Campus-Suffolk County C.C.	48
Eastern Connecticut State College	13
Eastern Illinois University	18
Eastern Iowa Community College District IX	20
Eastern Maine Voc. Tech. Institute	24
Eastern Michigan University	28
Eastern Montana College	33
Eastern Oregon State College	97
Eastern Region-Wayne County C.C.	31
Ecole Polytechnique	71
Edinboro State College	54
Edison Community College	16
Edmonds Community College	58
Educational Cultural Complex-San Diego C.C.	8
Edward Williams College	37
El Camino Community College	4
Elizabeth Skills Center-Union County College	39
Elkhorn Valley Campus-Metropolitan Tech. C.C.	34
Emerson College	25
Empire State College-SUNY	47
Endicott College	25
Erie Community College	42
Essex County College	37
Everett Community College	58
Evergreen Valley College	9
Fairbury Campus-Southeast Tech. C.C.	35
Fairleigh Dickinson University	37
Farmingdale-Polytechnic of N.Y.	45
Farmingdale Agric. & Tech. College-SUNY	46
Fashion Institute of Technology	42
Feather River College	7
Fergus-Falls Community College	32
Ferris State College	28

INDEX (Cont'd.)

Institution	Page No.
Fitchburg State College	26
Flint Campus at Detroit-Shaw College	31
Flint Campus-Univ. of Michigan	31
Florhan-Madison Campus-Fairleigh Dickinson Univ.	37
Florida Junior College	94
Florida Memorial College	16,88
Florissant Valley Campus-St. Louis C.C.	33
Fond du Lac Campus-Moraine Park Tech. Institute	62
Foothill College	4
Foothill-DeAnza Community College District	4
Fordham University	96
Fordham University Law School	42
Forest Park Campus-St. Louis C.C.	33
Fort Scott Community Junior College	23
Fort Steilacoom Community College	58
Fox Valley Technical Institute	61
Fox Valley Tech. Institute-Appleton	61
Fox Valley Tech. Institute-Oshkosh	61
Framingham State College	26
Franklin Pierce College	36
Fredonia State College-SUNY	47
Fresno-Calif. State University	2
Fresno City College	10
Front Range Community College	11
Fullerton-Calif. State University	2
Fullerton College	6
Fulton-Montgomery Community College	42
Galileo C.C. Center-San Francisco C.C.	8
Garden City Community Junior College	23
Garrett Heyns Educ. Center-C.C. District XII	58
Gateway Aviation Center-Kenosha	61
Gateway Technical Institute	61
Gateway Tech.-Elkhorn	61
Gateway Tech.-Kenosha	61
Gateway Tech.-Racine	61
Gavilan Community College	4
Genesee Community College	42
Genesee State College-SUNY	47
Georgia/Harvard St. Campus-Univ. of D.C.	15
Germantown Campus-Montgomery College	25

INDEX (Cont'd.)

Institution	Page No.
Glassboro State College	38
Glendale Community College	4
Glen Oaks Community College	28
Gloucester County College	37
Goddard College	57
Gogebic Community College	28
Golden West Community College	3
Governors State University	18
Grad. School & Univ. Center-CUNY	40
Grad. School of Biomedical Sciences	39
Grand Island-Region 2-Central C.C.	34
Grand Rapids Junior College	28
Grand Valley State College	95
Grays Harbor College	59
Greater Hartford Community College	12
Greater New Haven State Tech. College	13
Green Bay Campus-Northeast Wisc. Tech. Inst.	63
Green River Community College	59
Greenfield Community College	26
Grossmont College	4
Grossmont Community College District	4
Hamline University	95
Harbor Campus-C.C. of Baltimore	25
Harbor View Center-San Diego C.C.	8
Hartford Campus-Univ. of Conn.	14
Hartford State Technical College	13
Harvey Mudd College	3
Hastings-Region 3-Central C.C.	34
Hawkeye Institute of Technology	20
Hayward-Calif. State University	2
Henry Ford Community College	28
Herkimer County Community College	43
Highland Community College	18
Highland Lakes Campus-Oakland C.C.	30
Highland Park Community College	28
Highline Community College	59
Hillsborough Community College	16
Hilo Campus-Univ. of Hawaii	17
Hofstra University	43

INDEX (Cont'd.)

Institution	Page No.
Holyoke Community College	26,94
Honolulu Community College	17
Hostos Community College-CUNY	40
Housatonic Regional Community College	12
Hudson Valley Community College	43
Humboldt State University-CSU	2
Hunter College-CUNY	40
Hutchinson Community College	23
Illinois Board of Governors	18
Illinois Central College	19
Illinois Valley Community College	19
Imperial Valley College	4,93
Independence Community Junior College	23
Indian River Community College	16
Indian Valley College	6
Indiana Univ. of Pennsylvania	54
Institut Armand Frappier	71
Institut National de la Recherche Scientifique	71
Inver Hills Community College	32
Iowa Central Community College	20
Iowa Lakes Community College	21
Iowa Western Community College	21
Ithaca College	88,96
Jackson Community College	29
Jacksonville University	94
Jamestown College	87
Jamestown Community College	43
Jefferson Community College	43
Jersey City State College	38
John A. Logan College	19
John Adams Community Center-San Francisco C.C.	8
John Jay College of Criminal Justice-CUNY	40
John O'Connell C.C. Center-San Francisco C.C.	8
Johnson County Community Junior College	23
Johnson State College	57
Joliet Junior College	19
Juneau-Douglas Community College	1

INDEX (Cont'd.)

Institution	Page No.
Kalamazoo Valley Community College	29
Kansas City Community Junior College	23
Kapiolani Community College	17
Kauai Community College	17
Kean College of New Jersey	38
Kearney State College	35
Kearny Mesa Center-San Diego C.C.	8
Keene State College	36
Kellogg Community College	29
Kenai Peninsula Community College	1
Kendall School of Design	29, 88
Kennebec Valley Voc. Tech. Institute	24
Kennedy-King College	18
Kent State University	49
Kern Community College District	5
Kerney Center-Mercer County C.C.	37
Ketchikan Community College	1
King's College	97
Kings River Community College	10
Kingsborough Community College-CUNY	40
Kirkwood Community College	21
Kirtland Community College	29
Kodiak Community College	1
Kuskokwm Community College	1
Kutztown State College	54
Labette Community Junior College	23
Laboure Junior College	25
Lackawanna Junior College	53
LaGuardia Community College-CUNY	41
Lake County Community College	50
Lake Land College	19
Lake Superior State College	29
Lakehead University	70
Lakeshore Technical Institute	61
Lakewood Community College	32
Lamar Community College	11
Lane Community College	51
Laney College	7
Lansing Community College	29

INDEX (Cont'd.)

Institution	Page No.
Lasell Junior College	94
Laurentian University	70
Lawrence Institute of Technology	95
Leeward Community College	17
Lehigh County Community College	53
Lehman College-CUNY	41
Leicester College	25
Lewis and Clark Community College	19
Lewis University	19,88
Liberal Arts Campus-Long Beach City College	5
Liberty Campus-C.C. of Baltimore	25
Lincoln Campus-C.C. of Rhode Island	56
Lincoln Campus-Southeast Tech. C.C.	35
Lincoln University	53
Livingstone College	88
Lock Haven State College	54
Long Beach-Calif. State University	2
Long Beach City College	5
Long Island University-Brooklyn	43,88
Long Island University-College of Pharmacy	43,88
Long Island University-C.W. Post	44,88
Long Island University-Southampton Center	44,88
The Loop College	18
Loretto Heights College	12,88
Los Angeles-Calif. State University	2
Los Angeles City College	5
Los Angeles Community College System	5
Los Angeles Harbor College	5
Los Angeles Metropolitan College	5
Los Angeles Mission College	5
Los Angeles Pierce College	5
Los Angeles Southwest College	5
Los Angeles Trade-Technical College	5
Los Angeles Valley College	5
Los Medanos College	4
Los Rios Community College System	5-6
Lower Columbia College	59
Luzerne County Community College	53
Lyndon State College	57
Macomb County Community College	29
Madison Area Technical College-Ft. Atkinson	62

INDEX (Cont'd.)

Institution	Page No.
Madison Area Technical College-Madison	62
Madison Area Technical College-Portage	62
Madison Area Technical College-Reedsburg	62
Madison Area Technical College-Watertown	62
Madison Area Vocational & Technical	61-62
Main Campus-Cranford	39
Main Campus at Detroit-Shaw College	31
Main Campus-Henry Ford C.C.	28
Main Campus-Iowa Lakes C.C.	21
Main Campus-Jamestown C.C.	43
Main Campus-Kent State University	50
Main Campus-Mercer County C.C.	37
Main Campus-Metropolitan Tech. C.C.	34
Main Campus-Roger Williams College	56
Main Campus-University College	50
Main Campus-Vermillion	56
Main Campus-Wausau	62
Maine Vocational Technical Institute	23
Malcolm X College	18
Manchester Community College	12
Manhattan College	96
Mankato State University	32
Manoa Campus-Univ. of Hawaii	17
Mansfield State College	54
Marin Community College	6
Marinette Campus-Northeast Wisc. Tech. Inst.	63
Maritime College at Ft. Schuyler	47
Marshfield Campus-Mid-State Tech. Inst.	62
Marymount College	44
Marymount College of Virginia	57
Massachusetts Bay Community College	26
Massachusetts College of Art	26
Massachusetts Community College System	26
Massachusetts Maritime Academy	26
Massachusetts State Colleges	26
Massaioit Community College	26
Matanuska-Susitna Community College	1
Mau Community College	17
McCook Campus-Mid-Plains Tech. C.C. Area	34
McHenry County College	19
Medgar Evers College	41
Menomonie Adult & Voc. School	61
Menomonie Falls Campus-Waukesha County Tech. Inst.	63



INDEX (Cont'd.)

Institution	Page No.
Meramec Campus-St. Louis C.C.	33
Merced College	6
Mercer County Community College	37
Merrimack College	95
Merritt College	7
Metropolitan Campus-Cuyahoga C.C. District	49
Metropolitan State University	32
Metropolitan Technical Community College	34
Miami Dade Junior College	94
Michigan State University	95
Middlesex Community College-Conn. C.C. System	12
Middlesex Community College-Mass. C.C. System	26
Middlesex County College	37
Midway Campus Center-San Diego C.C.	8
Mid-Michigan Community College	29
Mid-Plains Tech. Community College Area	34
Mid-State Technical Institute	62
Miles Community College	33
Milford Campus-Southeast Tech. C.C.	35
Millersville State College	54
Miller-Searle Center-Henry Ford C.C.	28
Milton College	88
Milwaukee Area Technical College	62
Milwaukee Campus-Milwaukee Area Tech. College	62
Minneapolis Community College	32
Minneapolis-St. Paul Campus-Univ. of Minnesota	95
Minnesota Community College System	32
Minnesota State University System	32
Mira Mesa Campus Center-San Diego C.C.	8
Mission Community College Center-San Francisco C.C.	8
Mitchell College	13
Modesto Junior College	11
Mohawk Valley Community College	44
Mohegan Community College	12
Moanmouth College	37
Monroe County Community College	30
Montana State University	96
Montcalm Community College	30
Montclair State College	38
Montefiore Hospital/Medical Center-N.Y.	88
Monterey Peninsula Community College	6
Montgomery College	24

INDEX (Cont'd.)

Institution	Page No.
Montgomery County Community College	53
Moore College of Art	53
Moorhead State University	32
Moorpark College	10
Moraine Park Technical Institute	62
Moraine Valley Community College	19
Morgan Community College	11
Morrisville Agri. & Tech. College-SUNY	46
Merton College	19
Mott Community College	30
Mount Allison University	69
Mount Hood Community College	51
Mount San Antonio College	6
Mount San Jacinto College	6
Mount Sinai School of Medicine-CUNY	41
Mount Vernon College	87, 88
Mount Vernon Square Campus-Univ. of D.C.	15
Mount Wachusett Community College	26
Muscatin Community College	20
Muskegon Community College	30
Napa College	6
Nassau Community College	44
Nasson College	88, 90
Nathaniel Hawthorne College	96
National College of Business	56
Navajo Campus Center-San Diego C.C.	8
Nebraska State Colleges	35
Nebraska Western College-Scottsbluff	35
New Brunswick Campus-Rutgers State Univ. of NJ	38
New England College	87
New England Conservatory of Music	95
New Jersey Dental School	39
New Jersey Institute of Technology	38
New Jersey Medical School	39
New Jersey School of Osteopathic Medicine	39
New Jersey State College System	38
New Paltz State College-SUNY	47
New Richmond Campus-Wisc. Indianhead VTAE Distr.	63
New York City Campus-N.Y. Institute of Tech.	44
New York City Technical College-CUNY	41

INDEX (Cont'd.)

Institution	Page No.
New York Institute of Technology	44
New York University	96
New York University Law School	45
Newark Campus-Rutgers State Univ. of N.J.	38
Niagara County Community College	45
Niagara University	45
Normandale Community College	32
North Adams State College	26
North Campus-Broward C.C.	15
North Campus-C.C. of Allegheny	53
North Campus-Erie C.C.	42
North Campus-Milwaukee Area Tech. College	62
North Campus-Northeast Iowa Tech. Inst.	21
North Campus-Seattle C.C. District VI	59
North Campus-Southeastern C.C.	21
North Central Michigan College	30
North Central Technical Institute	62
North Country Community College	45
North Hennepin Community College	32
North Orange County Community College	6, 93
North Platte Campus-Mid-Plains Tech. C.C. Area	34
North Shores Campus Center-San Diego C.C.	8
North Shore Community College	26
Northampton County Area Community College	54
Northeast Iowa Tech. Institute (Area I)	21
Northeast Wisconsin Tech. Institute	63
Northeastern Junior College	11
Northeastern University-Ill.	18
Northeastern University-Mass.	95
Northern Essex Community College	26
Northern Maine Voc. Tech. Institute	24
Northern Michigan University	30, 95
Northern Montana College	34
Northland College	63, 98
Northland Community College	32
Northridge-Calif. State Univ.	2
Northwest Community College	1
Northwest Iowa Tech. College (Area IV)	21
Northwest Technical College	50
Northwestern Connecticut Community College	12
Northwestern Region-Wayne County C.C.	31
Norwalk Community College	12
Norwalk State Technical College	13

INDEX (Cont'd.)

Institution	Page No.
Oakland Community College	30
Oakland University	30
Oberlin College	97
Ocean County College	38
Ohio Northern University	87, 88
Ohio University	97
Okaloosa-Walton Junior College	94
Old Westbury-N.Y. Institute of Technology	44
Old Westbury State College-SUNY	47
Olive-Harvey College	18
Olympia Technical Community College	58
Olympic College	59
Oneonta State College-SUNY	47
Onondaga Community College	45
Ontario Institute for Studies in Education	70
Open Campus-Brevard C.C.	15
Orange Coast Community College	3
Orange County C.C.	45
Orchard Ridge Campus-Oakland C.C.	30
Oregon Institute of Technology	97
Oregon State University	97
Oswego State College-SUNY	47
Otero Community College	11
Oxnard College	10
Pace University	96
Pacific Coast Campus-Long Beach City College	5
Palm Beach Junior College	16
Palo Verde Community College	6
Park College	33
Parsons School of Design	88
Pasadena City College	7, 93
Passaic County Community College	38
Peninsula College	59
Pennsylvania State College & Univ. System	54, 97
Pensacola Junior College	94
Peralta Community College District	7
Peru State College	35
Philadelphia Campus-Temple Univ.	55
Philadelphia College of Art	97
Pikes Peak Community College	11

INDEX (Cont'd.)

Institution	Page No.
Pima Community College	1
Pittsburgh State University	23
Pitzer College	3
Plant City Campus-Hillsborough C.C.	16
Plattsburgh State College-SUNY	47
Plymouth Campus-Univ. System of New Hampshire	96
Point Park College	97
Polk Community College	94
Polytechnic Institute of New York	45, 88
Pomona-Calif. State Polytechnic Univ.	2
Pomona College	3
Porterville College	5
Portland Community College	51
Portland State University	51
Post College	13
Potsdam State College-SUNY	47
Prairie State College	19
Pratt Community College	23
Pratt Institute of New York	46, 88
Pratt Manhattan Center	46
Pratt Phoenix Center	46
Prince William Sound Community College	1
Providence Branch-Roger Williams College	56
Pueblo Community College	11
Purchase State College-SUNY	47
Queensborough Community College-CUNY	41
Queens Campus-St. Johns Univ.	46
Queens College-CUNY	41
Quincy Junior College	26
Quinebaug Valley Community College	12
Quinnipiac College	13
Quinsigmond Community College	26
Ramapo College of New Jersey	38
Rancho Santiago Community College District	7
Randolph-Macon College	98
Raymond Walters College	50

INDEX (Cont'd.)

Institution	Page No.
Reading Area Community College	54
Red Rocks Community College	11
Regis College	12
Rensselaer Polytechnic Institute	96
Rhode Island College	56
Rhode Island School of Design	56, 98
Rice Lake Campus-Wisc. Indianhead VTAE Distr.	63
Richard J. Daley Colleges	18
Ricker College	94
Rider College	38
Rio Grande	88
Rio Hondo Community College	7
Riverside Community College	7
Robert Morris College	54
Rochester Community College	32
Rockland Community College	46
Rockville Campus-Montgomery College	25
Rock Creek Campus-Portland C.C.	51
Roger Williams College	56
Rogue Community College	52
Rosary Hill College	96
Ross Island Center-Portland C.C.	51
Roxbury Community College	26
Rutgers Medical School	39
Rutgers State University of New Jersey	38
Rutherford Campus-Fairleigh Dickinson Univ.	37
Ryerson Polytechnical Institute	70
Sacramento-Calif. State Univ.	2
Sacramento City College	5
Saddleback Community College	7
Saginaw Valley State College	30
Saint Boniface	68
Saint Claud State University	32
Saint Joseph College-Maine	88
Saint Joseph's College-New York	96
Saint Leo College	17
Saint Louis Community College	33
Saint-Louis Maillet	69
Saint Mary's University	69

INDEX (Cont'd.)

Institution	Page No.
Saint Theresa College	88
Salem Community College	38
Salem College	87, 88
Salem Regional Campus-Kent State	50
Salem State College	26
San Bernardino-Calif. State College	2
San Diego City College	7
San Diego Community College Adult Ed. System	8
San Diego Community Colleges	7
San Diego Mesa College	7
San Diego Miramar College	7
San Diego State University	2
San Francisco Community College	8
San Francisco State University	2
San Joaquin Delta College	8
San Jose City College	9
San Jose Community College District	9
San Jose State University	2
San Luis Obispo-Calif. State Polytechnic Univ.-CSU	2
San Mateo Community College	9
Santa Barbara City College	9
Santa Clarita C.C. District	9
Santa Fe Community College	94
Santa Monica Community College	9
Satellite-Antigo Campus-North Central Tech. Inst.	62
Sauk Valley College	19
Schenectady County Community College	46
Schoolcraft College	30
School of Industrial & Labor Rels. at Cornell Univ.	41, 47
Scotch Plains Campus-Union County College	39
Scott Community College	20
Scripps College	3
Seattle Community College District VI	59
Seattle University	88, 98
Selden Campus-Suffolk County C.C.	48
Seton Hall University-New Jersey	87, 88
Seton Hill College-Pennsylvania	97
Shasta College	9
Shaw College at Detroit	31, 90
Shawnee State Community College	50
Shippensburg State College	54
Shoreline Community College	59
Sierra Joint Community College District	9
Simon Fraser University	73
Simon's Rock Early College	27, 88

INDEX (Cont'd.)

Institution	Page No.
Sitka Community College	1
Skagit Valley College	59
Skyline College	9
Slippery Rock State College	54
Solano Community College	9
Somerset County College	39, 96
Sonoma State University	2
South Campus-Broward C.C.	15
South Campus-C.C. of Allegheny County	53
South Campus-Erie C.C.	42
South Campus-Iowa Lakes C.C.	21
South Campus-Macomb County C.C.	29
South Campus-Metropolitan Tech. C.C.	34
South Campus-Milwaukee Area Tech. College	62
South Campus-Northeast Iowa Tech. Inst.	21
South Campus-Seattle Community District VI	59
South Campus-Southeastern C.C.	21
South Central Community College	12
South Dakota Board of Regents System	56-57
South Dakota School for the Deaf	57
South Dakota School for the Visually Handicapped	57
South Dakota School of Mines & Technology	57
South Dakota State University	57
Southeast Campus-Oakland C.C.	30
Southeast Center-Portland C.C.	51
Southeast Technical Community Colleges	35
Southeastern Campus-Univ. of Conn.	14
Southeastern Community College	21
Southeastern Massachusetts University	27
Southern Connecticut State College	13
Southern Maine Vocational Technical Institute	24
Southern Oregon State College	52
Southwest State University	32
Southwest Wisconsin Technical Institute	63
Southwestern College	10
Southwestern Community College	21
Southwestern Michigan College	87
Southwestern Oregon Community College	52
Spokane Community College	60
Spokane Falls Community College	60
Spokane Falls Community College District XVII	59-60
Spring Garden College	54
Springfield Technical Community College	26
St. Clair County Community College	30



INDEX (Cont'd.)

Institution	Page No.
St. John's University	46
St. Petersburg Junior College	94
St. Thomas University	69
St. Thomas More College	72
Stadium Center-Portland C.C.	51
Stamford University	14
Stanislaus-Calif. State College	2
Stark County Regional Campus-Kent State	50
State Center Community College District	10
State University of New York	46
Staten Island Campus-St. John's Univ.	46
Stephens College	87,88,96
Stephens Institute/Academy of Art College	88
Stevens Institute of Technology	87,89
Stevens Point Campus-Mid-State Tech. Inst.	62
Stockton State College	38
Stony Brook Health & Sci. Center-SUNY	48
Storrs Campus-Univ. of Conn.	14
Sturgeon Bay Campus-Northeast Wisc. Tech. Inst.	63
Suffolk County Community College	48
Sullivan County Community College	48
Superior Campus-Wisc. Indianhead VTAE Distr.	63
Sylvania Campus-Portland C.C.	51
Syracuse University	96
Tacoma Community College	60
Taft College	10
Takoma Park Campus-Montgomery College	25
Tamaka Valley Community College	1
Taylor Business Institute	48
Teaneck Campus-Fairleigh Dickinson Univ.	37
Technical University of Nova Scotia	69
Temple University	54
Temple University Law School	55
Thames Valley State Technical School	13
Thiel College	89
Thornton Community College	19
Titusville Campus-Brevard Community College	15
Tompkins-Cortland Community College	48
Torrington Campus-Univ. of Conn.	14

INDEX (Cont'd.)

Institution	Page No.
Towson State University	25
Treasure Valley Community College	97
Trenton State College	38
Trent University	70
Trinidad State Junior College	11
Triton College	20
Trocaire College	49
Truman College	18
Trumbull Regional Campus-Kent State	50
Tunxis Community College	12
Tuscarawas Regional Campus-Kent State	50
Tusculum College	98
Tyler School of Art Campus-Temple Univ.	55
Ulster County Community College	49
Umpqua Community College	97
Union County College	39
Universite de Moncton	68
Universite de Montreal	71
Universite de Quebec a Chicoutimi	71
Universite de Sherbrooke-Engineers	71
Universite du Quebec dans l'Ouest	71
Universite du Quebec a Hull	71
Universite du Quebec a Montreal	71
Universite du Quebec a Rimouski	71
Universite du Quebec a Trois-Rivieres	71
Universite Laval	71
Universite Sainte-Anne	69
University College of Cape Breton	69
University of Alaska	89, 93
University of Alaska Community College System	1
University of Alberta	68
University of Albuquerque	87, 89
University of Athabasca	68
University of Bridgeport	13
University of British Columbia	73
University of Calgary	68
University of California	10
Univ. of Calif.-Berkeley	93
Univ. of Calif.-Librarians	10
Univ. of Calif.-Nurses	10
Univ. of Calif. Professional Scientists & Engineers of the Lawrence Livermore National Labs	93

INDEX (Cont'd.)

Institution	Page No.
Univ. of Calif.-Santa Cruz	10
University of Cincinnati	50
University of Colorado	12, 93
Univ. of Colorado-Boulder	12, 93
Univ. of Colorado-Colorado Springs	12
Univ. of Colorado-Denver	12
Univ. of Colorado-Health Science Center	12
University of Connecticut	14
University of Delaware	14
University of Detroit	34, 95
University of the District of Columbia	15
University of Dubuque	21
University of Dubuque Seminary	22
University of Evansville	94
University of Florida-Gainesville	94
University of Guam	63
University of Guelph	73
University of Hawaii	17
University of Lethbridge	68
University of Lowell	27
University of Maine	24
Univ. of Maine-Augusta	24
Univ. of Maine-Farmington	24
Univ. of Maine-Fort Kent	24
Univ. of Maine-Machias	24
Univ. of Maine-Orono	24
Univ. of Maine-Presque Isle	24
University of Manitoba	68
University of Massachusetts	27
University of Medicine & Dentistry of New Jersey	39
University of Miami-Coral Gables	94
University of Michigan	31
University of Minnesota	32, 95
Univ. of Minnesota-Health Science	95
University of Minnesota Law School	95
University of Montana	34, 96
University of Nebraska College of Dentistry	96
University of Nebraska College of Law	35
Univ. of Nebraska-Lincoln	96
Univ. of Nebraska-Omaha	35
University of New Brunswick	69
University of New Haven	87, 89
University of Northern Iowa	22
University of Oregon	97
University of Oregon Grad. Teaching Fellows	52
University of Ottawa	70

INDEX (Cont'd.)

Institution	Page No.
University of Pittsburgh	55,97
Univ. of Pittsburgh Health Professional Schools	97
Univ. of Pittsburgh Law School	97
Univ. of Pittsburgh Medical School	55,97
Univ. of Pittsburgh-Provost Unit	98
University of Prince Edward Island	73
University of Regina	72
University of Rhode Island	56
University of San Francisco	10
Univ. of San Francisco-Coll. of Professional Studies	93
Univ. of San Francisco Law School	10
University of Saskatchewan	72
University of Scranton	55
Univ. of South Dakota-Springfield	57
University of Southern Maine	24
University of Toledo	97
University of Toronto	73
University of Vermont	98
Univ. of Washington Nursing Staff	60
University of Windsor	70
University of Winnipeg	68
Univ. of Wisconsin-Madison Teaching Assistants	63
University System of New Hampshire	96
Upstate Medical Center at Syracuse-SUNY	48
Urban Campus-Des Moines Area C.C.	20
U.S. Coast Guard Academy	13
U.S. Merchant Marine Academy	49
Utica College of Syracuse University	49
Van Ness Campus-Univ. of D.C.	15
Ventura College	10
Ventura County Community College District	10
Vermont State Colleges	57
Vermont Technical Colleges	57
Victor Valley College	10
Villanova University	89,98
Villa Maria College	97
Vista College	7

INDEX (Cont'd.)

Institution	Page No.
Wagner College	87,89
Walla Walla Community College	60
Warwick Campus-C.C. of Rhode Island	56
Waseca Campus-Univ. of Minn.	32
Washington County Voc. Tech. Institute	24
Washtenaw Community College	31
Waterbury Campus-Univ. of Conn.	14
Waterbury State Technical College	13
Waubensee Community College	20
Waukesha Campus-Waukesha County Tech. Inst.	63
Waukesha County Technical Institute	63
Waynesburg College	98
Wayne County Community College	31
Wayne State College	35
Wayne State University	31
Wenatchee Valley College	60
Wentworth Institute of Technology	27
Wesleyan University	93
West Bend Campus-Moraine Park Tech. Inst.	62
West Campus-Milwaukee Area Tech. College	62
West Campus-Pima C.C.	1
West Chester State College	54
West Hills College	10
West Los Angeles College	5
West Oahu College	17
West Shore Community College	31
Westchester Campus-Polytechnic of N.Y.	45
Westchester Community College	49
Western Attendance Center-Des Moines Area C.C.	20
Western Campus-Suffolk County C.C.	48
Western Campus-Cuyahoga C.C. District	49
Western Connecticut State College	13
Western Illinois University	18
Western Iowa Technical Community College	22
Western Michigan University	31
Western Montana College	34
Western Nebraska Tech. College-Sidney	35
Western Oregon State College	52
Western States Chiropractic College	52
Western Tech. Community College Area	35
Western Wisconsin Technical Institute	63
Westfield State College	26
Westmoreland County Community College	55
Whatcom Community College	60

INDEX (Cont'd.)

Institution	Page No.
Wichita State University	89
Wilberforce University	50, 89
Williamsport Area Community College	55
William Paterson College of New Jersey	38
William Rainey Harper College	20, 94
Willmar Community College	32
Wilson College	98
Windward Community College	17
Winona State University	32
Wisconsin Indianhead VTAE District	63
Wisconsin Rapids Campus-Mid-State Tech. Inst.	62
Worcester College-Becker Junior College	25
Worcester State College	26
Worthington Community College	32
Wright College	18
Yakima Valley College	60
Ybor Campus-Hillsborough C.C.	16
Yeshiva University	89
York College-CUNY	41
York University	70
Yosemite Community College District	11
Youngstown State University	50
Yuba College	11

NATIONAL CENTER FOR THE STUDY OF COLLECTIVE  
BARGAINING IN HIGHER EDUCATION AND THE PROFESSIONS

PUBLICATIONS, 1973 - 1984

The publications of the National Center have proved to be of invaluable assistance to researchers and practitioners in the field of higher education collective bargaining for up-to-date analysis of developments in the field, as well as for historical content. In addition to the Directory of Faculty Contracts and Bargaining Agents, the Center issues the following publications:

PROCEEDINGS

PRICE

<u>STRUCTURAL REFORM IN HIGHER EDUCATION COLLECTIVE BARGAINING</u> Ninth Ann. Conf., 1984.....	\$15.00
<u>COLLECTIVE BARGAINING IN A PERIOD OF RETIREMENT</u> Eleventh Ann. Conf., 1983.....	15.00
<u>CAMPUS BARGAINING AT THE CROSSROADS</u> , Tenth Ann. Conf., 1982.....	5.00
<u>THE LEGAL AND ECONOMIC ISSUES OF COLLECTIVE BARGAINING IN</u> <u>HIGHER EDUCATION</u> , Ninth Ann. Conf., 1981.....	5.00
<u>CAMPUS BARGAINING IN THE EIGHTIES</u> , Eighth Ann. Conf., 1980.....	5.00
<u>LANDMARKS IN COLLECTIVE BARGAINING IN HIGHER EDUCATION</u> , Seventh Ann. Conf., 1979.....	5.00
<u>THE ENTIRENESS OF COLLECTIVE BARGAINING IN HIGHER EDUCATION</u> , Sixth Ann. Conf., 1978.....	5.00
<u>COLLECTIVE BARGAINING AND THE FUTURE OF HIGHER EDUCATION</u> , Fifth Ann. Conf., 1977.....	5.00
<u>COLLECTIVE BARGAINING IN HIGHER EDUCATION</u> , Fourth Ann. Conf., 1976.....	5.00
<u>COLLECTIVE BARGAINING IN HIGHER EDUCATION</u> , Third Ann. Conf., 1975.....	5.00
<u>COLLECTIVE BARGAINING IN HIGHER EDUCATION</u> , Second Ann. Conf., 1974.....	5.00
<u>COLLECTIVE BARGAINING IN HIGHER EDUCATION</u> , First Ann. Conf., 1973.....	5.00

BULLETIN/VOLUMES

1984 - Vol. 12.....	\$15.00
Vols. 4 - 11.....	5.00
Vol. 2 (Vols. 1 and 3 Out of Print).....	5.00

NEWSLETTERS

<u>COLLECTIVE BARGAINING IN HIGHER EDUCATION: Analysis of Issues</u> 5 issues/year.....	2.00 ea.
(Back issues available for research purposes).....	20.00

DIRECTORIES

<u>DIRECTORY OF FACULTY CONTRACTS AND BARGAINING AGENTS IN</u> <u>INSTITUTIONS OF HIGHER EDUCATION (Annual) 1975 to Present</u> .....	12.00
<u>CITY UNIVERSITY OF NEW YORK INDEX, DECISIONS AND TABLES OF</u> <u>ARBITRATION AND COURT CASES, 1969-1974</u> .....	25.00

BOOKS AND MONOGRAPHS

Kamuker, Dan - <u>PROFESSIONAL STAFF CONGRESS REVIEW OF ARBITRATIONS</u> <u>AND DECISION OF SELECTED RELATED ISSUES</u> .....	25.00
Douglas, Joel M. and Molly Curtin - <u>CONTRACT DEVELOPMENT IN HIGHER</u> <u>EDUCATION FACULTY COLLECTIVE BARGAINING, 1980</u> .....	20.00
Douglas, Joel M., Loren A. Krause and Leonard Whitford - <u>WORKLOAD</u> <u>AND PRODUCTIVITY BARGAINING IN HIGHER EDUCATION</u> , Monograph #3, 1980.....	6.00
Montz, Bernard - <u>LIVING WITH COLLECTIVE BARGAINING: A CASE STUDY OF</u> <u>THE CITY UNIVERSITY OF NEW YORK</u> , Monograph #2, 1979.....	7.95
Chandler, Margaret K. and Daniel J. Julius - <u>FACULTY vs. ADMINISTRATIONS:</u> <u>CRUCIAL ISSUES IN ACADEMIC COLLECTIVE BARGAINING</u> , Monograph #1, 1979.....	6.00

